

THE  
STROMBERG CARLSON  
TELEPHONE MFG. CO.



REGISTERED  
*“Central  
Energy”*

TRADE MARK

CHICAGO, U.S.A.

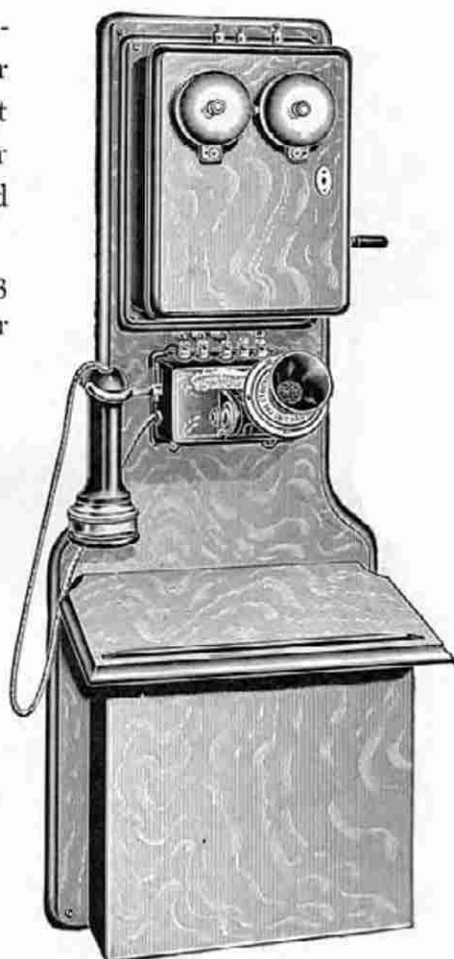
© 1925 STROMBERG-CARLSON

## Toll Line Telephone

The accompanying illustration shows our regular bridging toll line instrument furnished with either four or five-bar generator and high wound ringers.

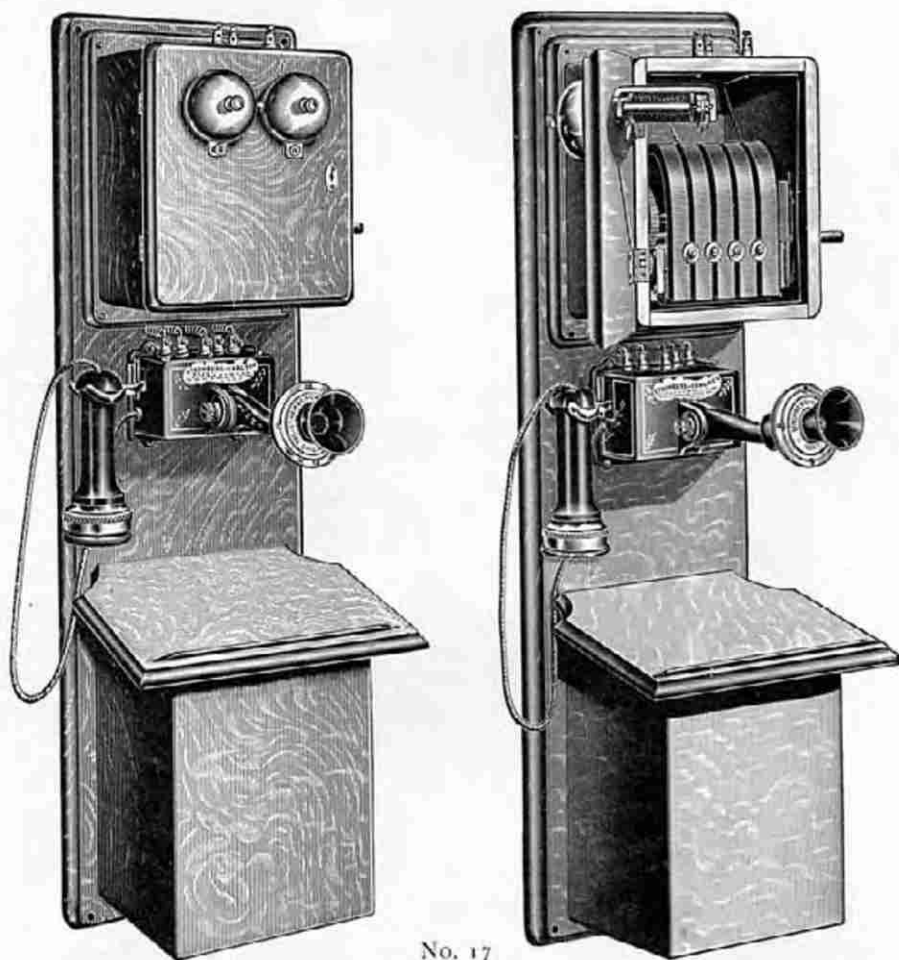
No. 14. Same as No. 13 but equipped with four-bar series magneto having ringer coils connected in multiple for series toll lines.

These instruments are regularly provided with wide battery box for two cells standard battery but will be furnished with narrower backboard and battery box for two cells Stromberg-Carlson battery or two dry cells if preferred.



No. 13

## Country Party Line Bridging Telephone

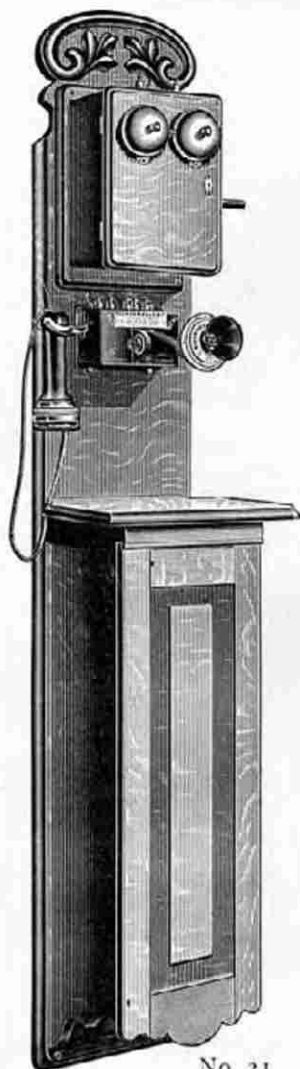


No. 17

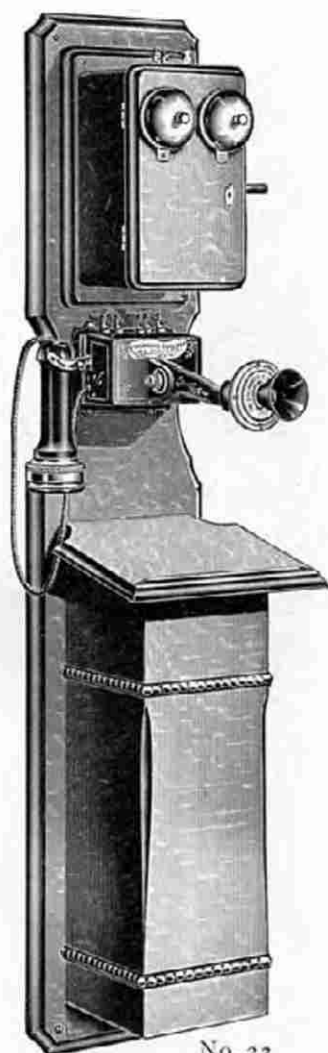
This telephone is equipped with magneto having five-bar generator, bridging ringers and No. 50 Triplet. It is especially intended for heavily loaded country party lines.

No. 19. Country party line instrument with four-bar generator, otherwise same as above.

## Tandem Telephones

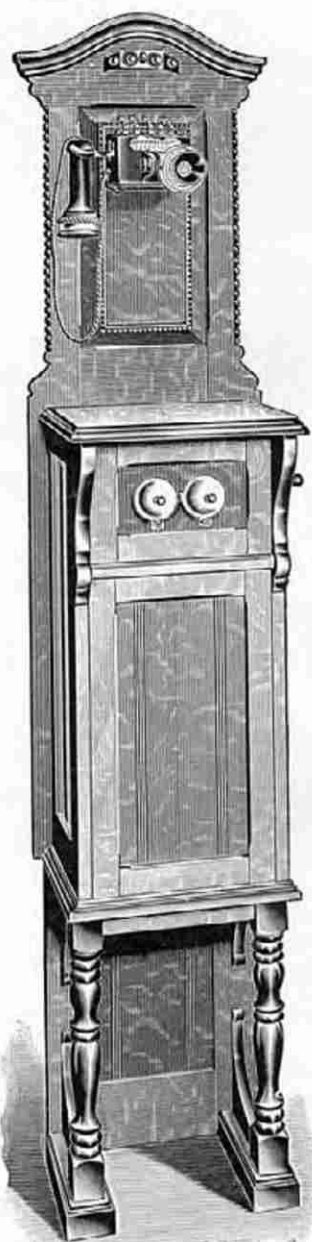


No. 21



No. 23

These instruments furnished with our regular series magnetos for exchange use, or bridging magnetos for toll or party line service.



No. 29.

## Cabinet Wall Telephone

This telephone is regularly furnished in quarter-sawed oak, or will be made to order in any finish desired.

It is equipped with our No. 50 triplet, series ringers and four-bar generator for exchange use, bridging ringers and four or five-bar generator for long distance toll and country party line service, or with ringer and condenser for "Central Energy" systems.



Substantially Made  
Well Finished

## Cabinet Desk Telephone



No. 33

A handsome and convenient outfit for office or toll station.



Equipment same as No. 29 on preceding page and adapted for same service.



This instrument has a capacity for two cells standard Fuller battery which can be used if desired.

## Divided Circuit Central Checking Telephones

These instruments are furnished in any of the bridging toll or country party line types, but are equipped with direct current generators.

On a line where these telephones are installed the stations cannot signal each other, it being first necessary to call central office, where the line terminates on a drop, thus enabling the operator to keep a record of all calls.

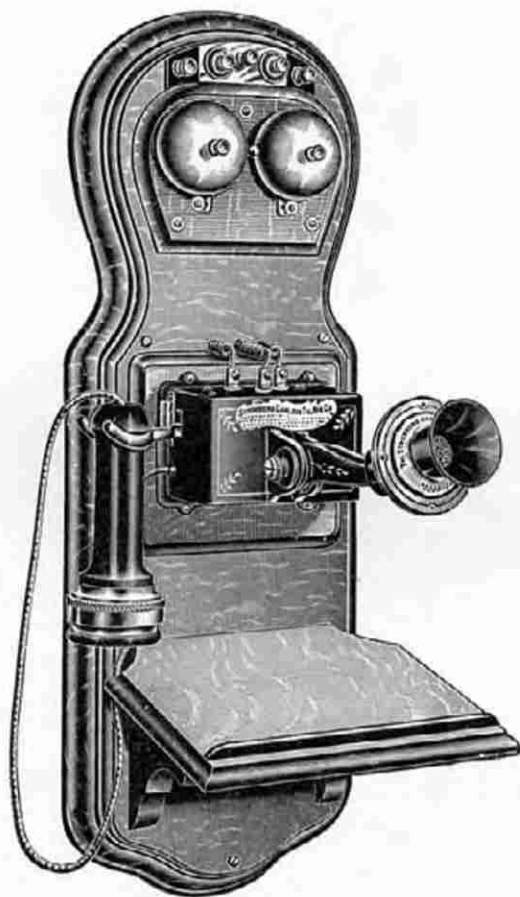
On full metallic construction the ringers are connected alternately to opposite sides of the line, and the operator, by means of a key provided for the purpose, selects the particular side of line over which it is desired to signal, and proceeds as usual, ringing the bells on that side of line only; on grounded lines all of the ringers are actuated.

All telephones are regularly finished in quarter-sawed oak or walnut woodwork.

Two cells of Stromberg-Carlson compound wet batteries or two dry cells are furnished with each instrument.

The Stromberg-Carlson Telephone Manufacturing Company

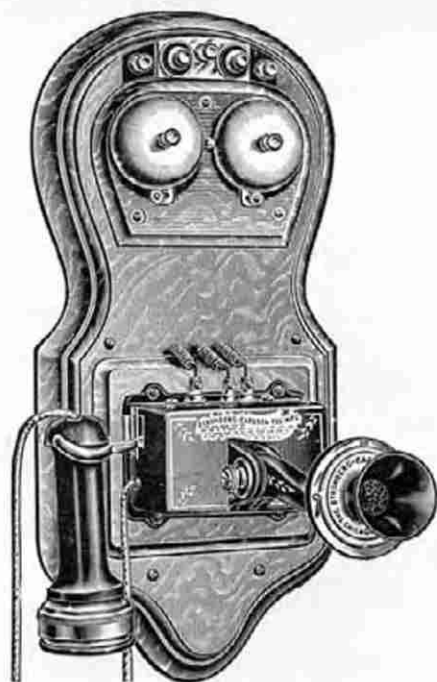
## The "Central Energy" Office Telephone



No. 37.

"Central Energy" wall telephone designed for office use or where a small shelf on the telephone is desired.

## “Central Energy” Residence Telephone

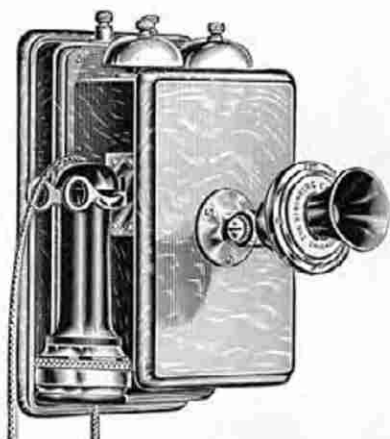


No. 35

“Central Energy” wall telephone, neatly designed and compactly built for residences and offices where a small instrument is preferred.

These telephones are regularly furnished in either quarter-sawed oak or walnut woodwork, but will be made to order in mahogany, cherry, or any finish desired.

## “Central Energy” Residence Telephone



No. 36

This telephone is of special design and is intended for either residence or office where a small compact instrument is desirable.

All “Central Energy” telephones are equipped with our long distance adjustable arm transmitter, bi-polar receiver, platinum contact switch, carbon disc lightning arrester, polar-

ized ringers with condenser mounted in backboard. They can be used only in connection with “Central Energy” switchboards.

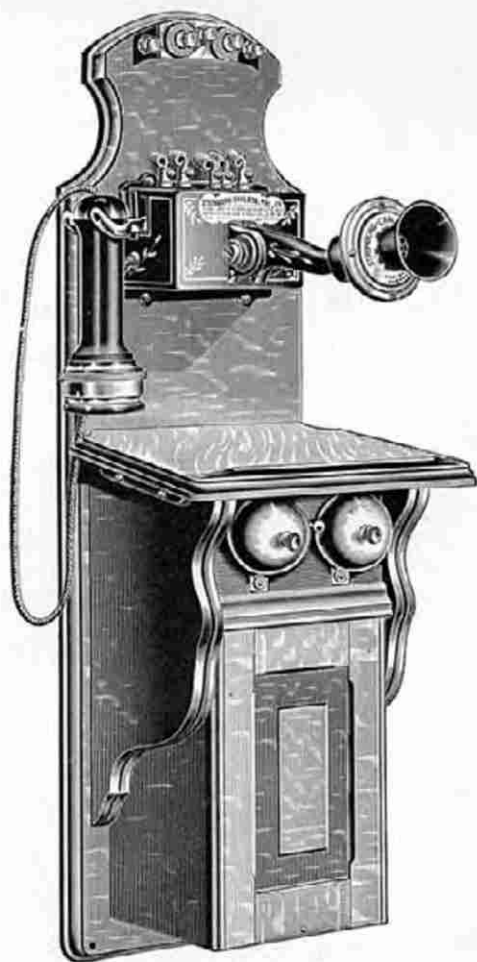
The subscriber signals central automatically by simply removing receiver from the hook and signals for disconnection by replacing the receiver.

No. 4. “Central Energy” desk telephone and extension bell with condenser. (See page 5.)

No. 9. “Central Energy” combination telephone and extension bell with condenser. (See page 6.)

“Central Energy” exchanges can be connected through repeaters with generator call exchanges and long distance toll lines.

## Local Battery "Central Energy" Telephone



No. 39

For exchanges with local talking and central ringing energy. Equipped with push button if desired. Furnished with two cells Stromberg-Carlson battery or two cells dry battery.

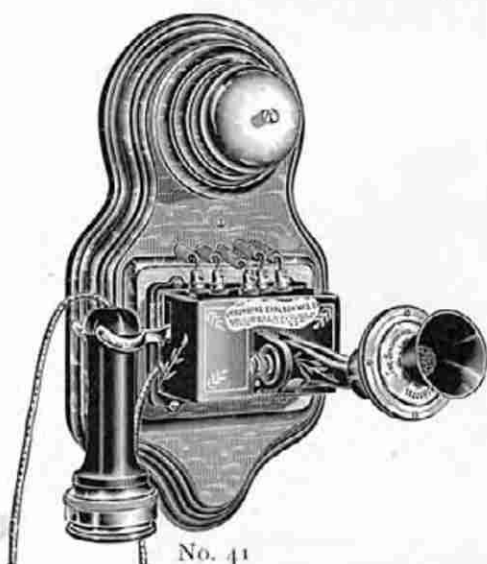
The Stromberg - Carlson  
Telephone Manufacturing  
Company : Chicago U S A

General Descriptive  
Catalogue  
1901

*ILLUSTRATED*

OFFICE AND FACTORY  
70-82 WEST JACKSON BOULEVARD, COR. CLINTON STREET  
TELEPHONE HARRISON 1451  
CABLE ADDRESS: "STROMCARL, CHICAGO"  
CODE: WESTERN UNION, UNIVERSAL EDITION

## Private Plant Telephone



No. 41

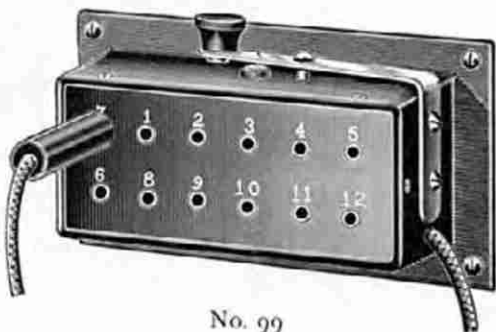
A telephone for use in private exchange system with "Central Energy" switchboard.

Equipped with our standard triplet, and furnished with vibrating bell for battery signaling.

## Central Energy Intercommunicating System

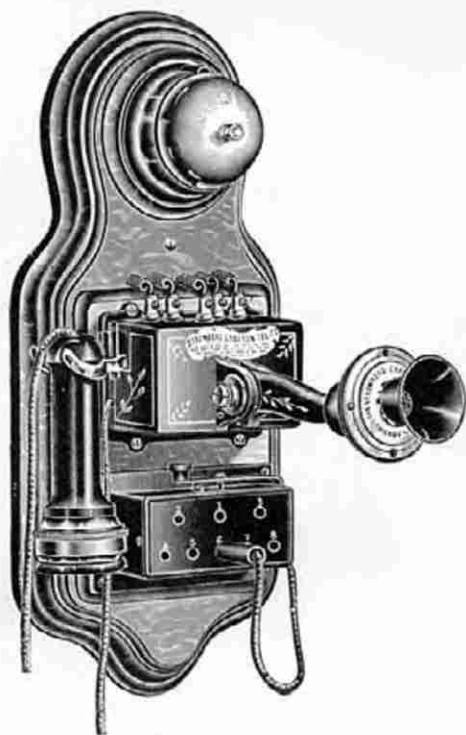
In small private plants where it is desirable to dispense with the services of an operator, the telephone is equipped with a plug switch (No. 99) having capacity as required.

The switch is equipped with ringing key and connecting cord and plug. Failure to restore the plug to the home number or leaving it entirely out of the switch, does not prevent that station from receiving the signal.



No. 99

## Battery Call Intercommunicating Telephone



No. 43

The telephone and plug switch shown is for private plant inter-communicating system in offices, factories, stores, residences, public buildings, etc. All the batteries for talking and ringing energy are placed at one point.

No. 26. Intercommunicating Desk Telephone. (See page 5.)

No. 28. Intercommunicating Combination Telephone. (See page 6.)

## Generator Call Inter-communicating Telephone

Our regular type series telephone with four-bar magneto, long distance transmitter and receiver, and provided with intercommunicating plug switch of any desired capacity.



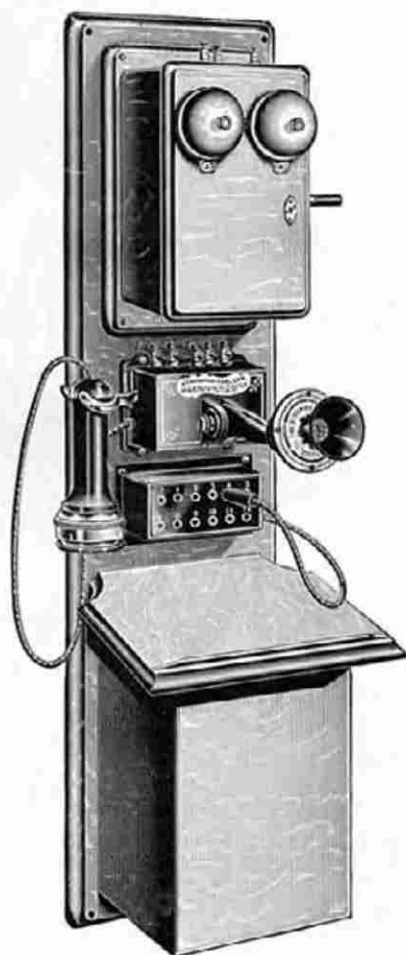
This instrument is intended for intercommunicating system having long lines.



Especially adapted for service between mines and offices, various shops in manufacturing plants, etc.



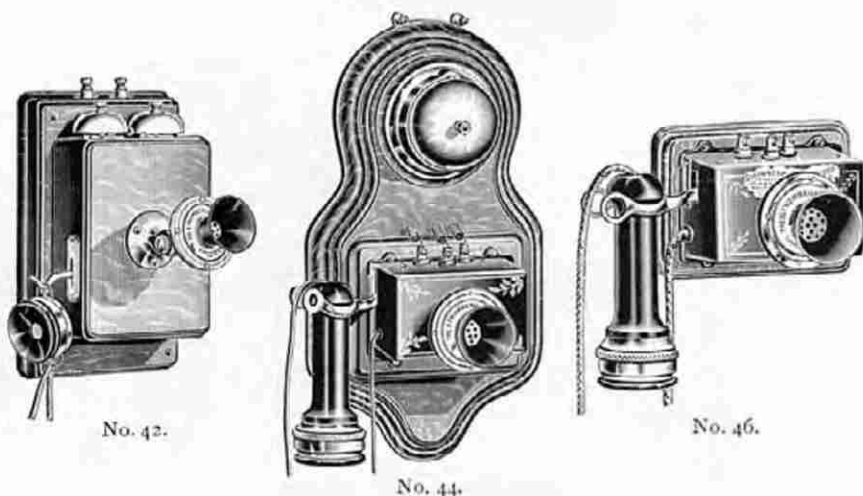
No operator required.



No. 27.

## Hotel Telephones

These instruments are intended for hotel service in connection with "Central Energy" Switchboards.



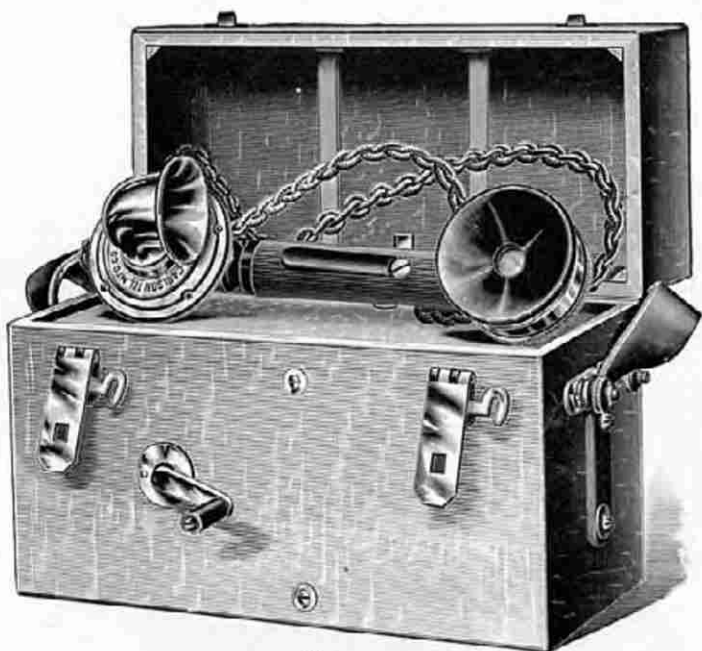
No. 42. Equipped with our regular transmitter mounted on short adjustable arm, polarized bells with condenser, special switch hook and watch case receiver.

No. 44. Equipped with stationary transmitter, bi-polar receiver and vibrating bell for battery signalling.

Furnished with adjustable arm if preferred.

No. 46. Equipped with bi-polar receiver, stationary or adjustable arm transmitter. Is intended for service in connection with return call annunciator systems, and can be installed without additional wiring. Does not interfere with annunciator service.

## Testing Telephones



No. 47

This instrument is a complete portable telephone and is especially intended for long distance toll line work. It consists of combination set, generator, polarized buzzer, induction coil, switch, two-pony dry batteries, detachable crank, etc., all compactly mounted in highly polished quarter-sawed oak dove-tailed case with nickeled trimmings and leather carrying strap.

No. 49. Lineman's Exchange Test Set for testing lines and other work where it is not convenient to use the No. 47.

It is equipped with a generator, polarized buzzer and a powerful double-pole watchcase receiver, which is also used as a transmitter for short distance work.

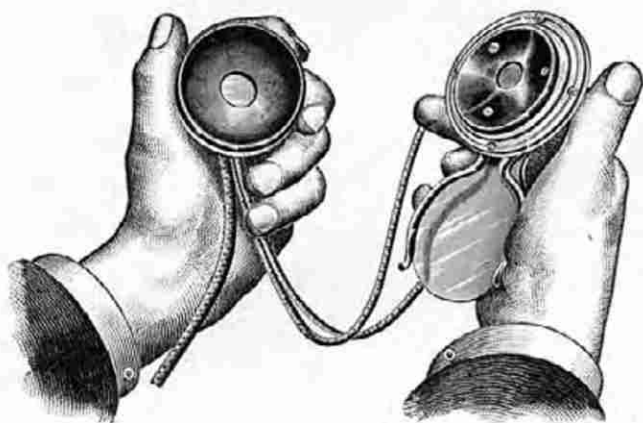


No. 49

## Pocket Telephone



No. 48. Telephone closed, with case.



No. 48. Showing telephone in use.

This instrument consists of a special flat long distance transmitter mounted on aluminum base with pronged hook for holding the bi-polar watchcase receiver.

It is especially intended for use in connection with "Central Energy" System, fire alarm or street railway lines where the talking and signalling battery is supplied from a central station.

It is equipped with cord and plug for connection with line at jacks conveniently located or without plug if preferred.

A neat leather carrying case is furnished with each instrument.

## Manual Restoring Drop Switchboard

This board is equipped with non-inductive tubular line and clearing-out drops and German silver platinum contact spring jacks.

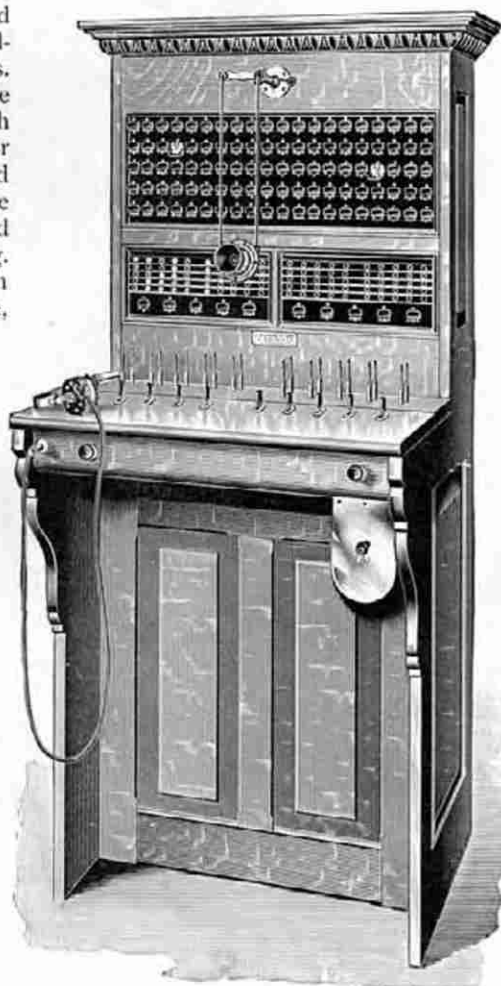
It is made in sections of one hundred (100) line capacity each and with a trunking capacity for one thousand lines or more, is wired full metallic throughout, and can be used on common return or grounded circuits without change of wiring.

Each section is provided with the necessary operator's telephone, five-bar hand generator, platinum contact ringing and listening keys, plugs, cords, weights, power generator and night alarm switches, and sufficient cable to reach lightning arresters if the distance does not exceed fifteen feet.

Sections will be furnished wired for the full capacity and with any number of line equipments installed.

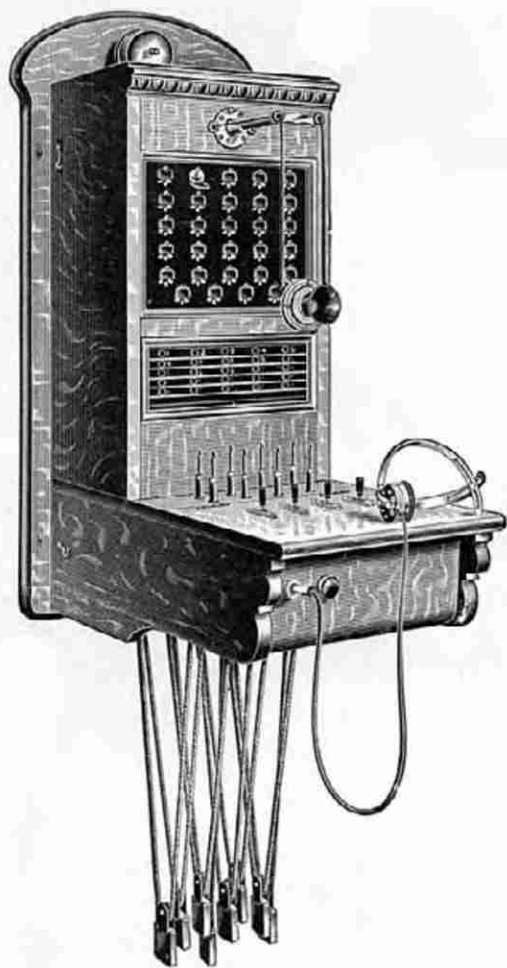
No. 201. A one hundred line section of manual restoring drop switchboard with operator's telephone, night bell, generator and connecting appliances, mounted in highly polished quarter-sawed oak cabinet.

No. 202. A fifty-line switchboard for small village exchanges, otherwise same as No. 201.



No. 201.

## Village Exchange Switchboard



No. 205.

A 25-line wall switchboard fully equipped with tubular line drops, with night alarm circuit, tubular clearing-out drops, and a complete operator's telephone, hand generator and proper connecting appliances.

## Combination Telephone Switchboard

Combination wall telephone and switchboard of fifteen lines capacity with tubular line and clearing out drops and platinum contact spring jacks neatly mounted on polished hard rubber plate.



The board is provided with the "Triplet" talking set, heavy five-bar generator, night bell, two pairs of connecting cords, plugs, weights and keys and the necessary batteries.



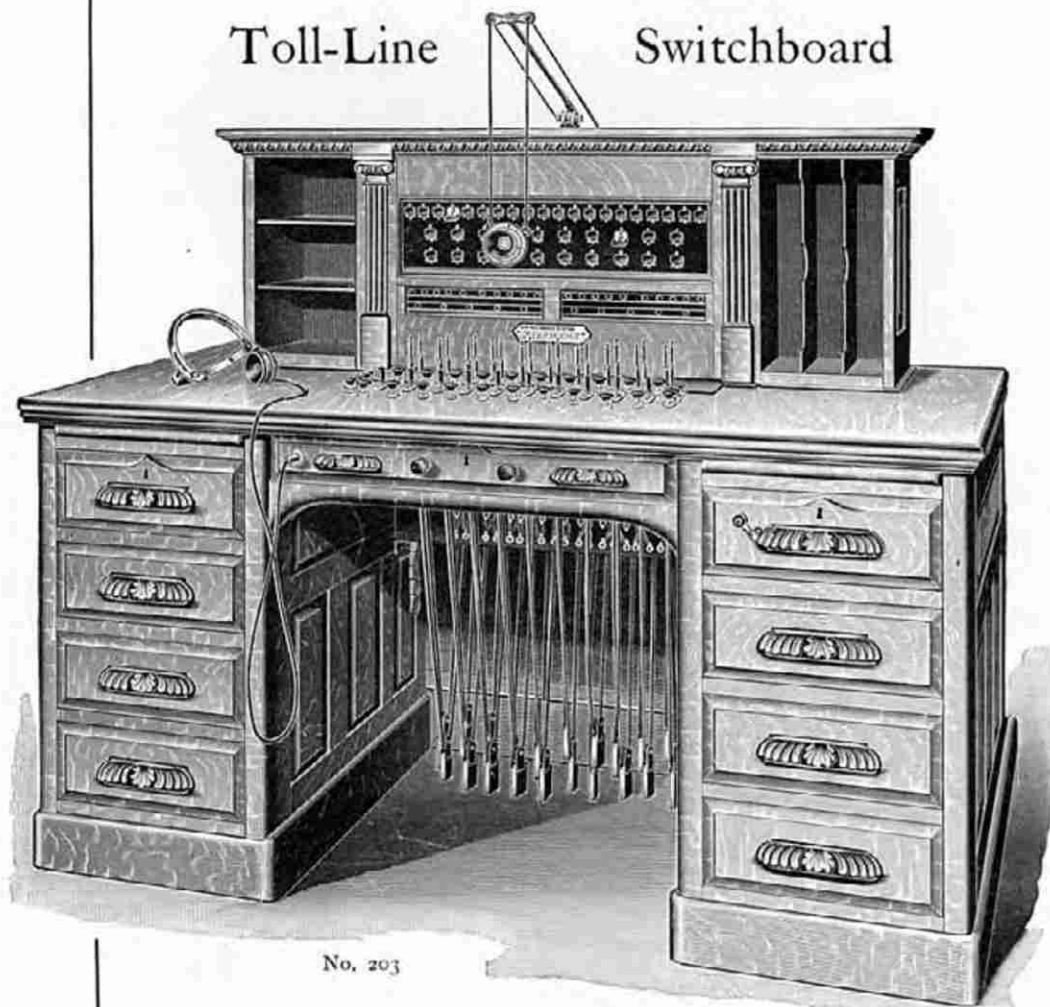
The battery box is of sufficient size to contain the batteries for both night alarm and transmitter.



No. 206

The Stromberg-Carlson Telephone Manufacturing Company

Toll-Line Switchboard



No. 203

This desk switchboard is furnished with necessary connecting cords, high wound tubular line and clearing out drops, two-way ringing and listening keys, five-bar generator and complete operator's telephone.

Will be equipped with repeating coils, trunk jacks, and instruction circuit keys, if desired.

Can be used with local battery or "Central Energy" exchanges.

Will be furnished with two or more operator's positions if required.

## Introductory

OUR efforts are directed to the manufacture of a complete line of telephone and switchboard apparatus of the highest quality that money and skill can produce.

We make every detailed part, from the raw material, directly under our own supervision.

It has always been our aim to maintain a standard of excellence which cannot be surpassed.

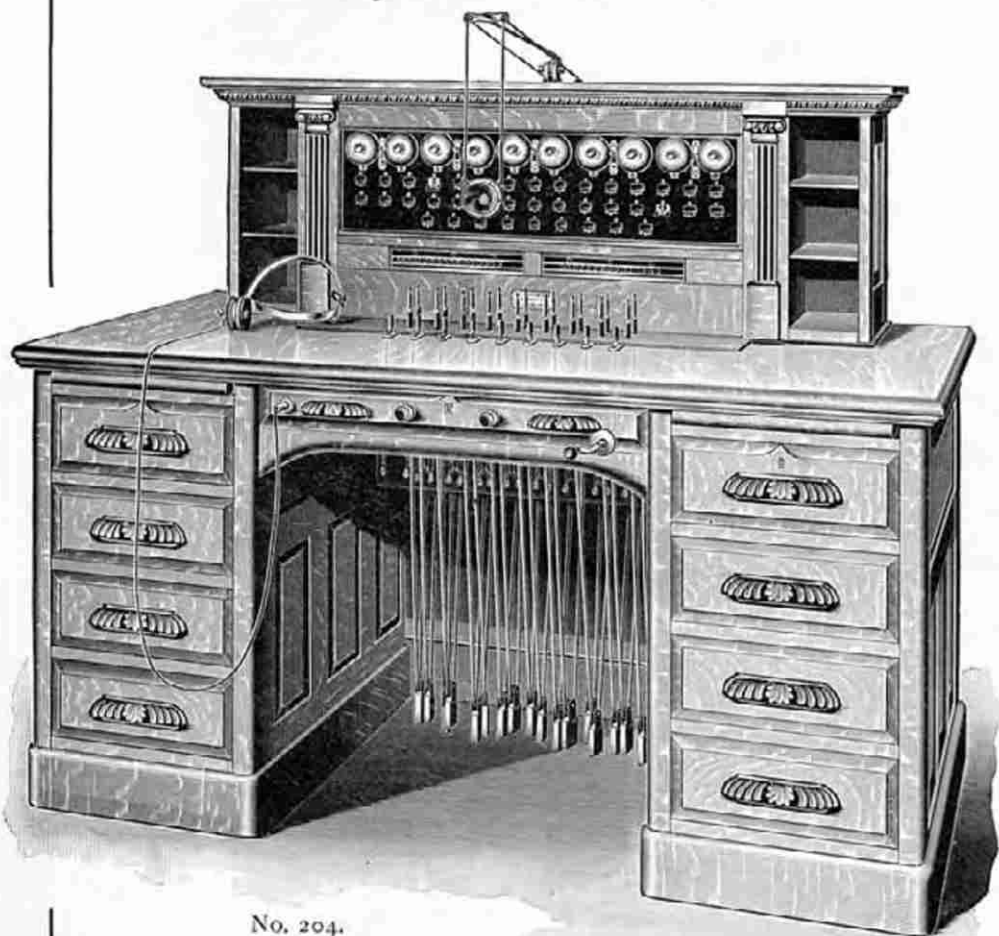
In connection with the equipment, which is shown and briefly described in this catalogue, we are in position to furnish any and all material and supplies required to build or maintain telephone plants or lines of any kind.

We will be pleased to furnish any information desired and respectfully solicit your correspondence.

The Stromberg-Carlson Telephone  
Manufacturing Company  
Chicago, U. S. A.

The Stromberg-Carlson Telephone Manufacturing Company

## Combined Toll Line and Country Party Line Switchboard



No. 204.

This board is provided with regular drops for toll lines and polarized bells for country party lines.

It is especially adapted for exchanges requiring a separate toll board with a large number of toll lines and country party lines.

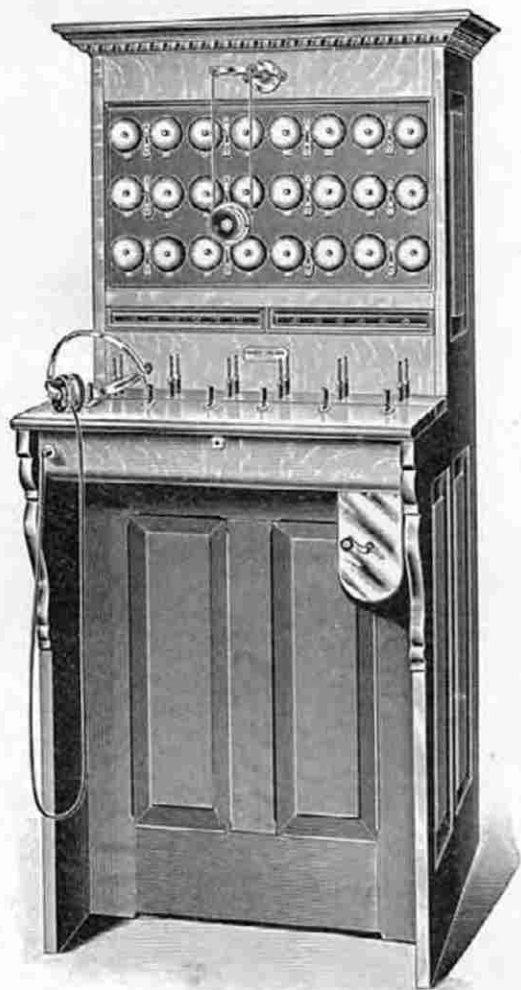
## Country Party Line Cabinet Switchboard

No. 207. Cabinet switchboard with high wound polarized bells for bridging lines or low resistance bells for series lines.

Equipped with operator's telephone, special toll line generator, proper connecting cords, plugs, weights, and ringing and listening keys.

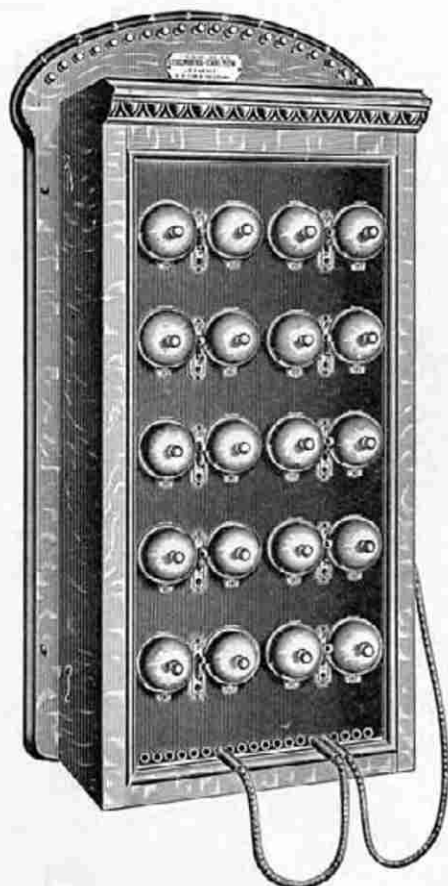
Each bell is provided with an automatic indicator.

No. 208. Same as above, but arranged for both country lines and village exchange subscribers, using bells for the former and tubular drops for the latter.



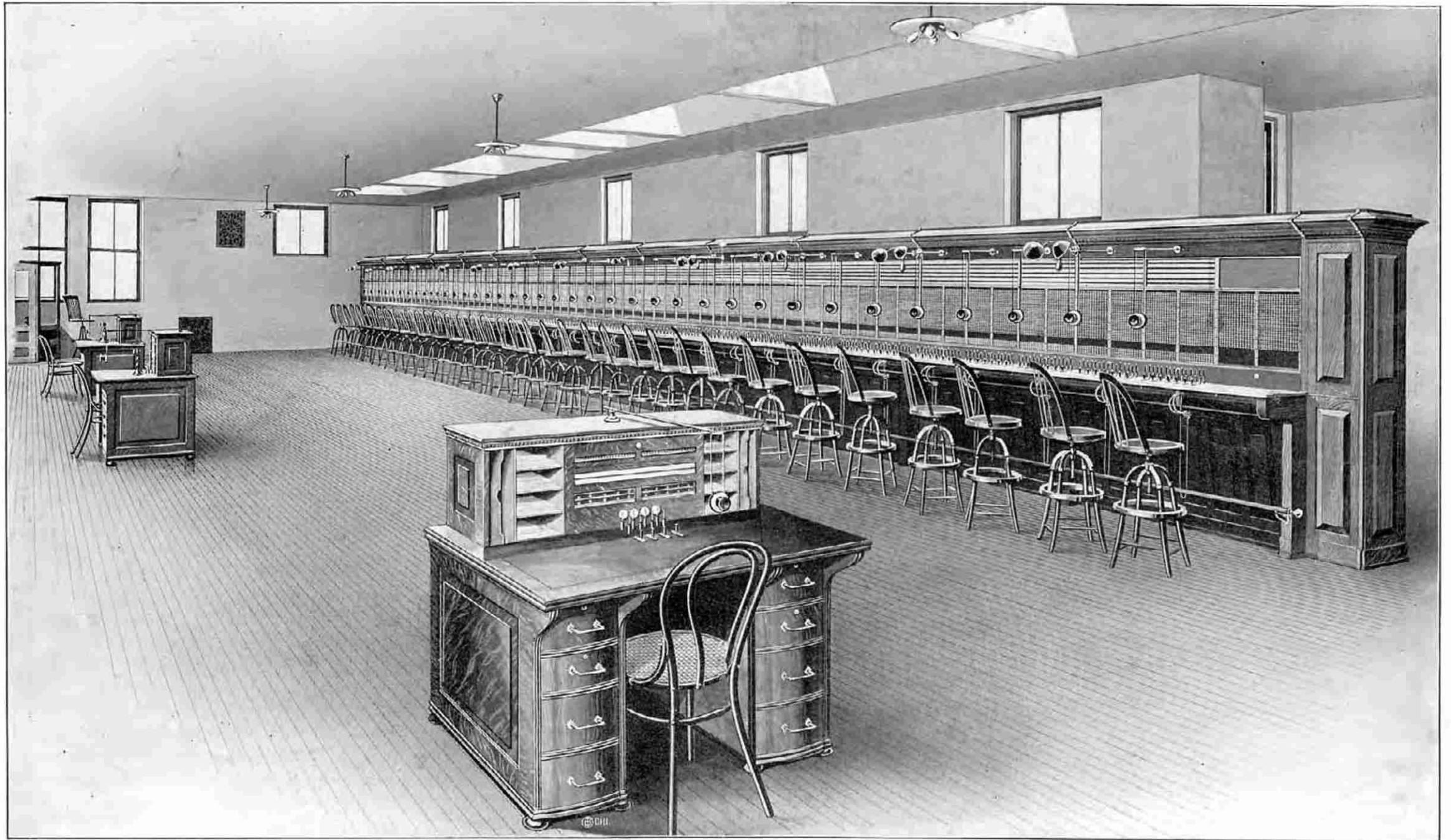
No. 207

## Country Party Line Wall Switchboard



No. 209

A ten (10) number wall cabinet country party line switchboard. Can be used with either wall or desk telephone. It is provided with two pairs of connecting cords and plugs and an additional cord and plug to be attached to the telephone with which it is used.



3600 line "Central Energy" Multiple Switchboard, Rochester Telephone Company,

Rochester, N. Y., showing Manager's, Chief Operator's, and Supervising Operator's desks.

## Lamp Line Signal Generator Call Switchboard

The application of this type of board to the requirements of exchanges using magneto call telephones is a new feature in the telephone field but it is by no means an experiment with us as all of the principles involved have been carefully worked out in our well known "Central Energy" system.

The line signals consist of small lamps mounted in banks of ten directly over the corresponding spring jacks. The subscriber signals as usual, the slightest impulse of current from the generator being sufficient to operate the lamp signal, which remains illuminated until cut out of circuit by inserting the plug in the spring jack.

The clearing-out signal consists of a small red lamp for each pair of cords and is located in the key shelf. It is illuminated by the subscriber's signal for disconnection, and this condition is in force until the connection is taken down.

Made in any capacity in sections of 100, 120 or 140 lines, and each section is provided with the necessary trunking facilities, operating equipment, etc.

No. 212. Same as No. 210 but arranged for fifty capacity only, for village exchanges and private plants.

## Visual Signal Generator Call Switchboard

No. 214. This board is similar in appearance to our "Central Energy" Visual Signal Board, illustrated on page 38.

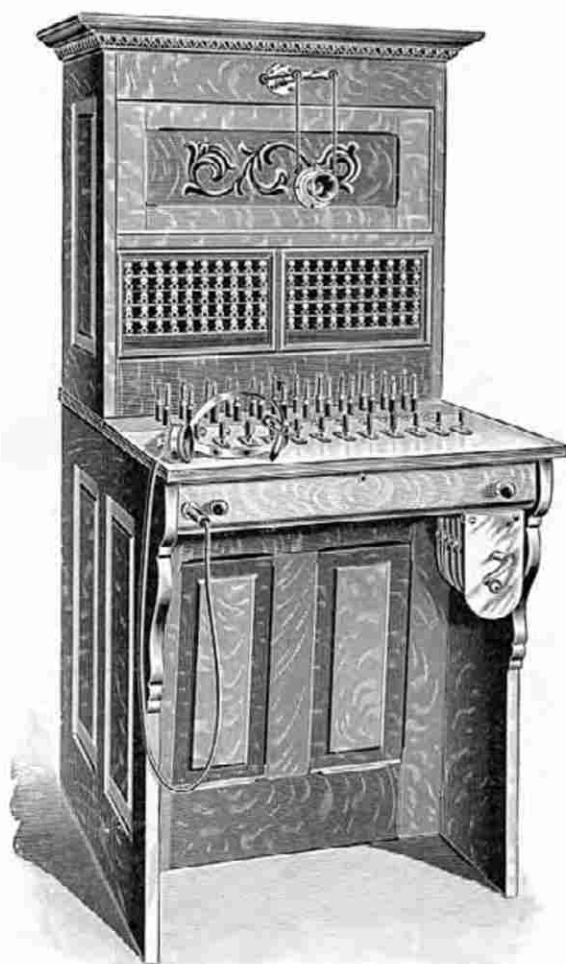
It is equipped with tubular line and clearing-out visuals mounted back of ground glass with transparent stripes through which the signals are shown. The line signals restore automatically when the call is answered by the operator and the clearing-out in a similar manner when connection is taken down.

Each section is provided with the full complement of operating and trunking appliances.

No. 216. Same as above but arranged for fifty line capacity for village exchange or private plant.

The Stromberg-Carlson Telephone Manufacturing Company

## Lamp Line Signal Generator Call Switchboard



No. 216.

## The "Central Energy" System

The name "Central Energy" as applied to this system is original with us and is protected by our registered trade-mark.



The system is broadly covered by letters patent and is absolutely non-infringing.



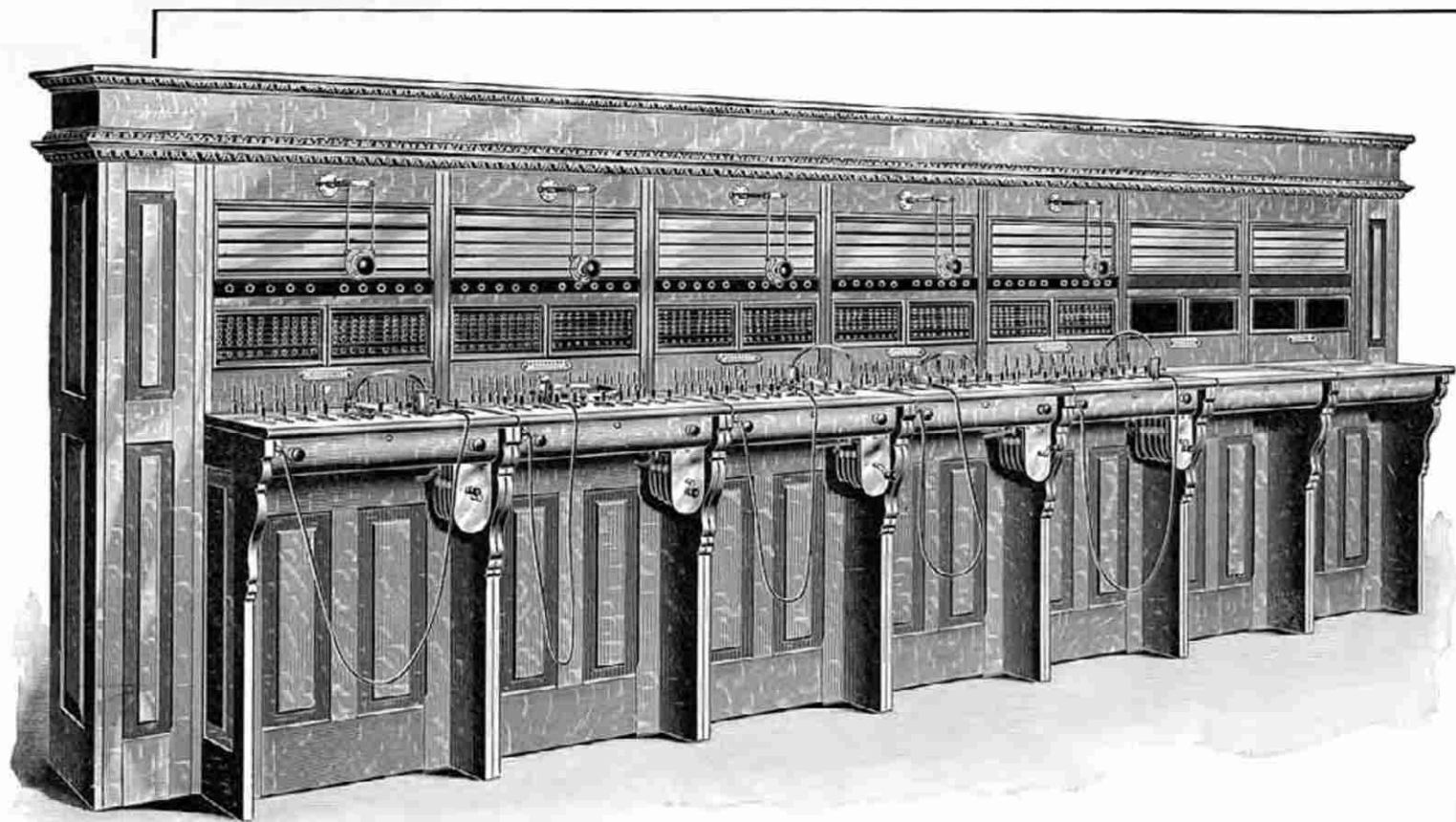
It has been in practical operation in many of the larger cities for a sufficient period to demonstrate its superiority over any other system ever invented.



It is adapted for public and private exchanges of any size, and is especially intended to meet the exacting demands of large exchanges where rapid and efficient service is required.



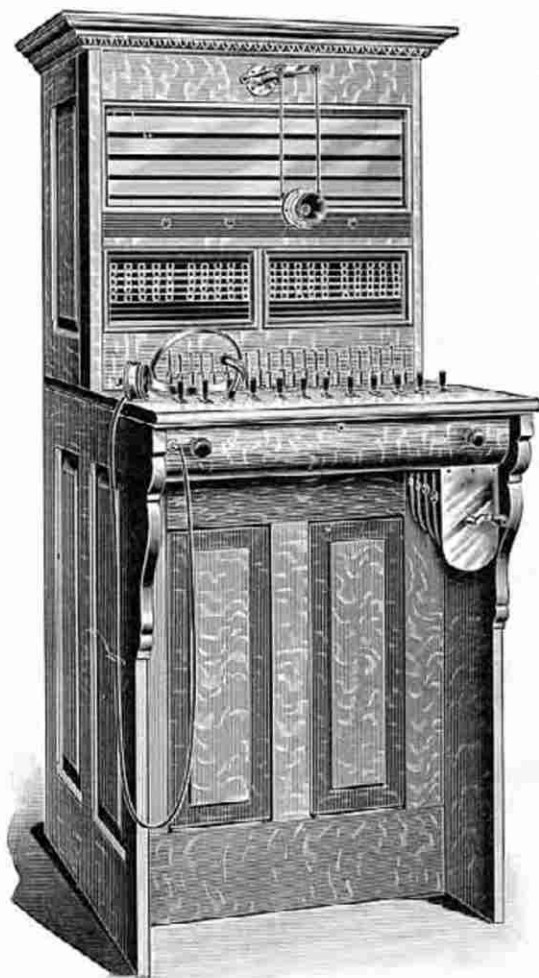
Its simplicity and convenience of operation and low cost of maintenance are advantages which warrant its general adoption.



700 capacity, 500 line equipped "Central Energy" Trunking Switchboard with visual line signals, built in sections of 100 lines each with a trunking capacity for a 1,000-subscriber exchange.

The Stromberg-Carlson Telephone Manufacturing Company

## “Central Energy” Exchange Switchboard



No. 101. 100-line visual signal board.

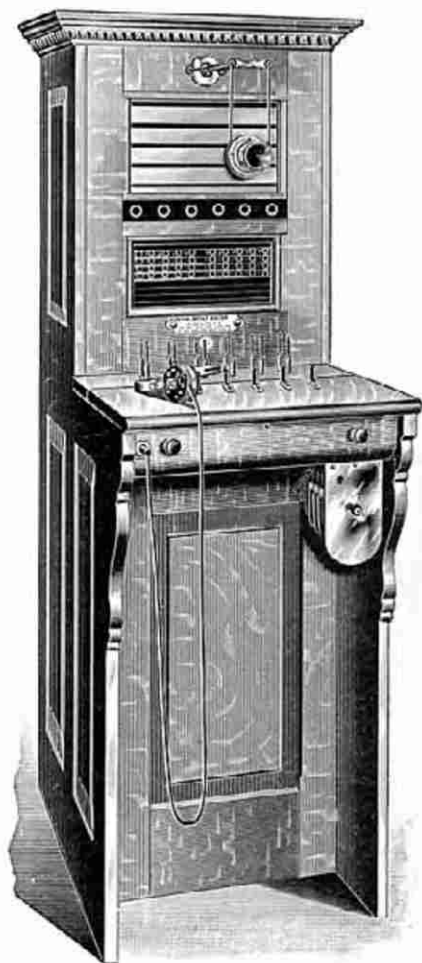
This switchboard is arranged with a trunking capacity for a thousand line exchange.

It is provided with the necessary operating and connecting appliances, with pilot lamp and miniature lamp clearing out signals, hand generator for emergency use, and night alarm and power generator switches.

The board shown is equipped with non-inductive tubular visual line signals.

The capacity can be increased at any time by adding sections of one hundred lines each.

## “Central Energy” Switchboard for Public or Private Telephone Exchange



No. 102. 50-line “Central Energy”  
Switchboard.

This board is our regular style “Central Energy” board made up in a frame for 50-line capacity for small public exchanges or private plants. It is equipped with visual line signals and electric light clearing-out signals and pilot lamp. It is arranged for using power generator in calling, and is provided with a hand generator for emergency use. It is provided with six pairs of cords, plugs, weights, ringing and listening keys and clearing-out signals. The line equipments may be installed in lots of ten.

## Contents

	Page
Introductory . . . . .	2
Notice to Purchasers . . . . .	4
Portable Desk and Combination Telephones . . . . .	5-6
Generator Call Wall and Cabinet Telephones . . . . .	7-13
Divided Circuit Central Checking Telephones . . . . .	14
"Central Energy" Telephones . . . . .	15-18
Private Plant Telephones . . . . .	19-21
Hotel Telephones . . . . .	22
Testing Telephones . . . . .	23-24
Manual Restoring Drop Switchboards . . . . .	25-29
Country Party Line Switchboards . . . . .	30-31
"Central Energy" Multiple Switchboard . . . . .	32-33
Lamp Line Signal Generator Call Switchboard . . . . .	34-35
Visual Signal Generator Call Switchboard . . . . .	35
"Central Energy" System . . . . .	36
"Central Energy" Trunking Switchboards . . . . .	37-39
"Central Energy" Lamp Line Signal Switchboard . . . . .	40-41
"Central Energy" Private Exchange Switchboards . . . . .	42-43
Power Switchboard . . . . .	44-45
Combination Lightning Arrester and Distributing Rack . . . . .	46-49
Heat Wire Lightning Arrester . . . . .	50-51
Magnetos, Generators and Extension Bells . . . . .	52-54
The Triplet . . . . .	55
Transmitter . . . . .	56
Special Transmitter Arms . . . . .	57
Receivers . . . . .	58-59
Switchboard Parts . . . . .	60-62
Construction Material and Supplies . . . . .	64

## Lamp Line Signal "Central Energy" Switchboard

This board is made in any capacity in sections of 100, 120 or 140 lines, and each section is provided with a pilot lamp, the necessary operator's telephone, connecting appliances, double supervisory clearing-out signals, hand generator and switches for night alarm and power generator.

When subscriber removes receiver from the hook the pilot lamp, which is located directly in front of operator, is illuminated as is also a small opalescent lamp line signal placed immediately over the spring jack corresponding to the subscriber's number.

Both of these signals are restored automatically by the operator by inserting plug in jack, unless more than one subscriber on that section of board is calling in which case the pilot lamp remains illuminated, indicating that additional service is desired.

The supervisory clearing-out signals consist of small red lamps, one being provided for each cord, and are mounted in pairs in the key shelf opposite each pair of cords.

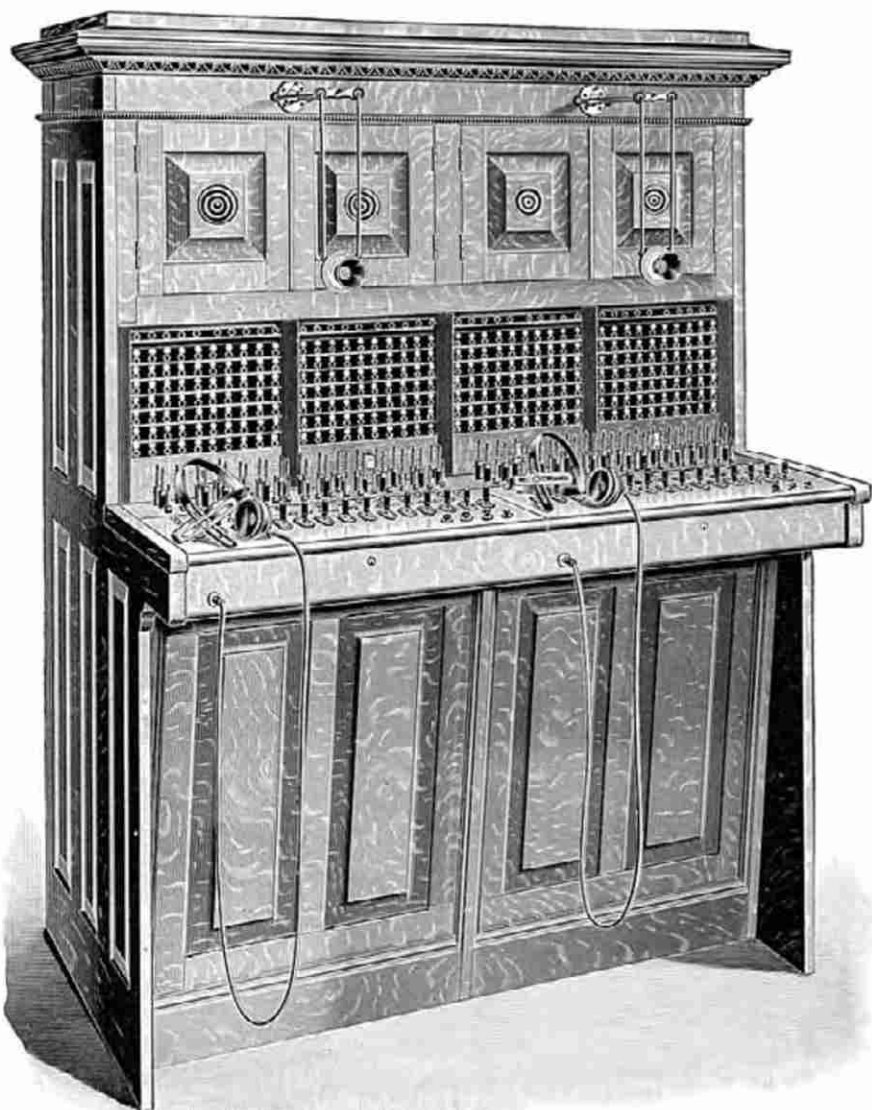
When connection is made the lamp corresponding to cord used in calling illuminates and so remains until call is answered.

When either or both subscribers replace their receivers on the hook their respective signals are again shown, thus enabling the operator to determine at all times the conditions of every connection. The signals restore automatically when connection is taken down.

No. 107. Same as No. 106 but arranged for a capacity of less than 100 lines to suit the requirements of the purchaser.

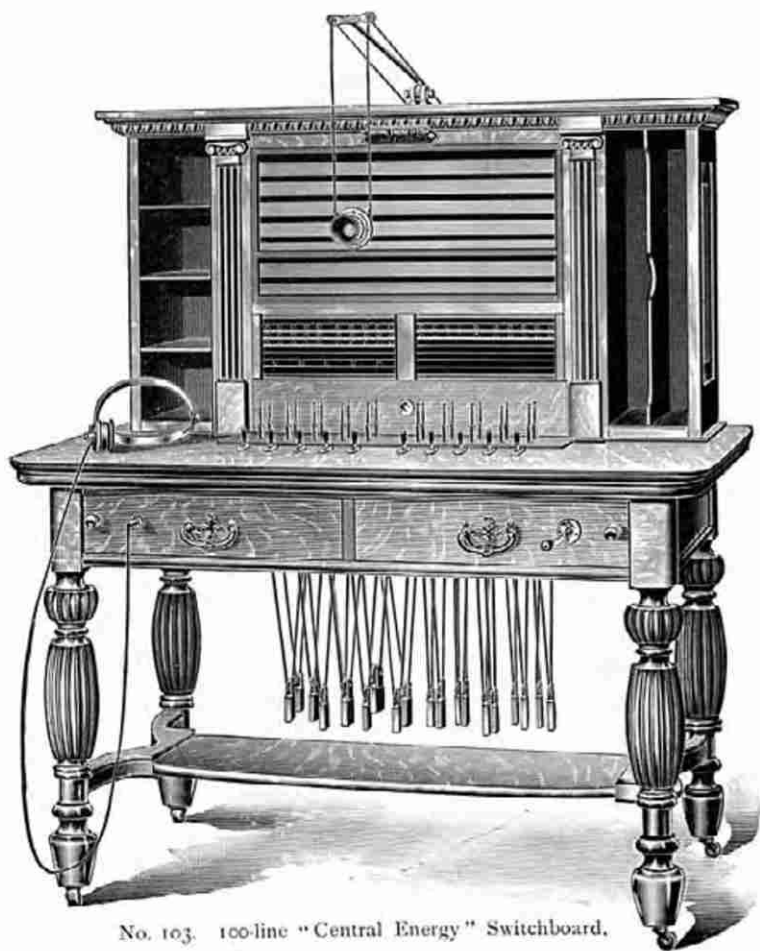
The Stromberg-Carlson Telephone Manufacturing Company

## Lamp Line Signal "Central Energy" Switchboard



No. 106. Capacity 280 lines.

## Private Exchange Switchboard



No. 103. 100-line "Central Energy" Switchboard.

The board shown above is especially adapted for large private telephone system. It is a regular 100 line "Central Energy" exchange board neatly mounted on a table with bookcase and pigeonholes.

It is provided with visual clearing-out signals, visual line signals with corresponding jacks, necessary trunking jacks for connecting to the public exchange, and complete operator's telephone.

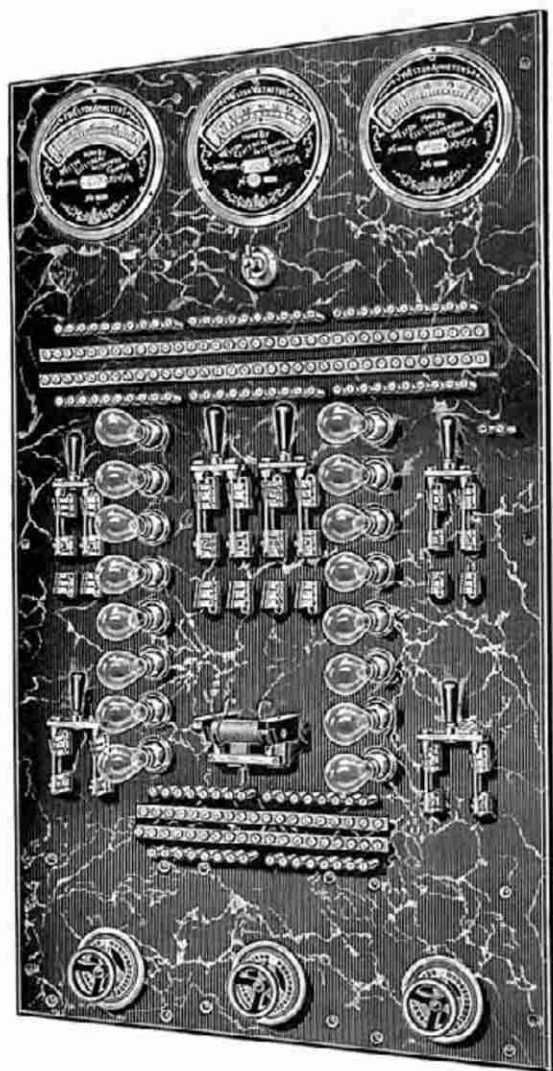
## “Central Energy” Hotel System Switchboard



No. 104. 200-line Private Exchange Switchboard.

The board shown was specially designed for hotel service. It is provided with visual line signals with pilot lamp and buzzer. Each position is equipped with a complete “Central Energy” operator’s instrument and three pairs of connecting appliances. Made to order in any style and finish woodwork.

## Power Switchboard

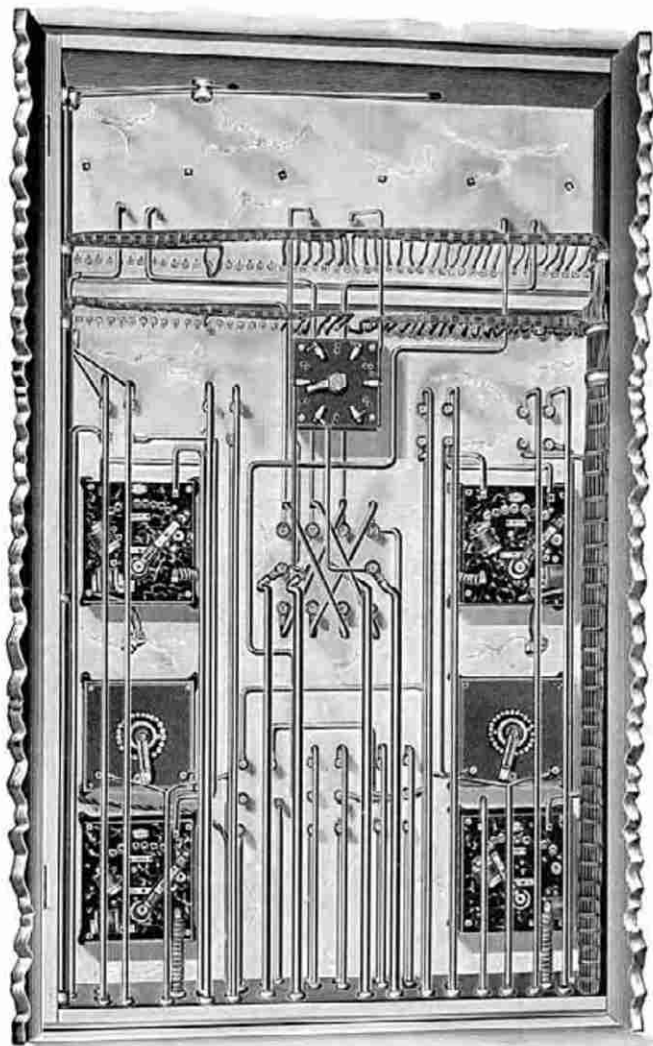


Front View.

On the power board for "Central Energy" exchanges are mounted all necessary switches for controlling the storage batteries, charging machines, ringing generators, and the starting boxes, field regulators, ammeters, volt meter, automatic cut-out switch, bus-bars, operator's circuit fuses, etc.

All the parts are neatly and firmly mounted on a heavy marble or slate slab.

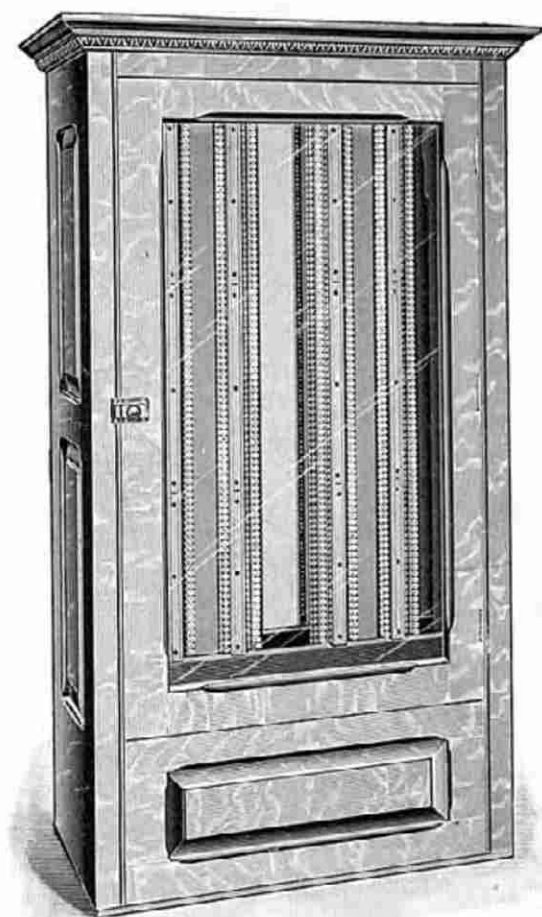
## Power Switchboard



Rear View.

Showing the wiring of the switches, measuring instruments, starting boxes, field rheostats, etc.

## Distributing and Lightning Arrester Board in Cabinet

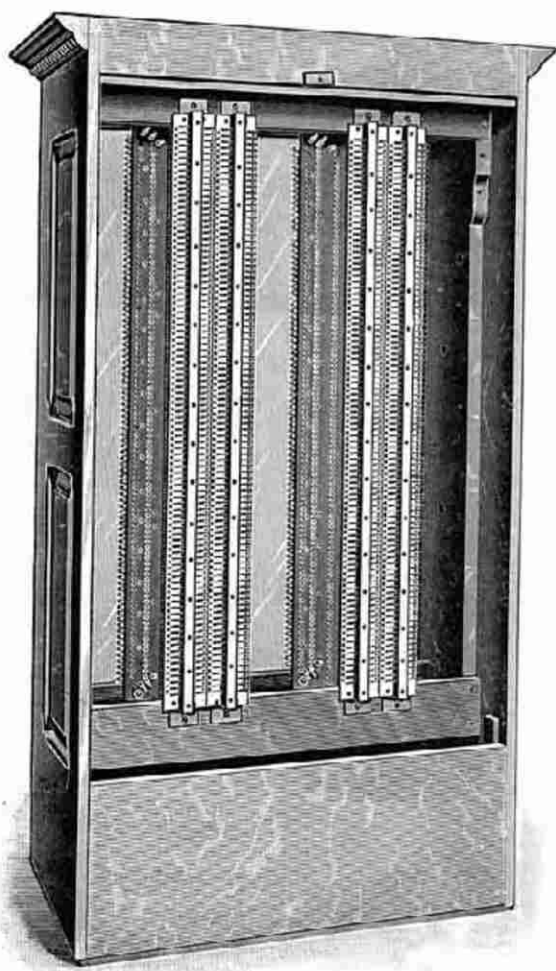


No. 260. Front View. Size of Cabinet,  $66\frac{3}{8}$  x 31 x 14 in.

A 200-line capacity combination lightning arrester and distributing board neatly mounted in quarter-sawed oak cabinet with glass door.

No. 261. Same as above but with capacity for 400 lines.

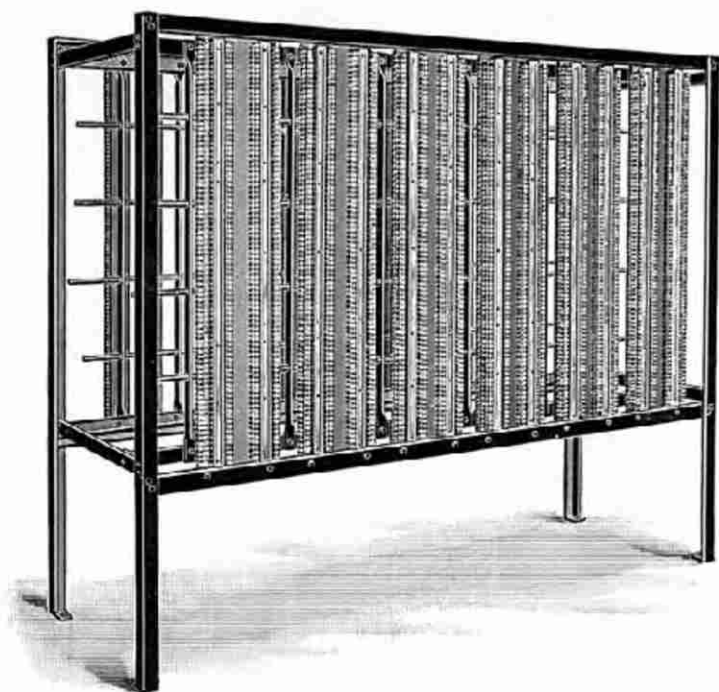
## Combination Cabinet



No. 260. Rear View.

An illustration of the rear of combination cabinet, showing 200 pairs cross connecting clips mounted on strips of 50 pairs each. The cabinet is closed with a removable panel door.

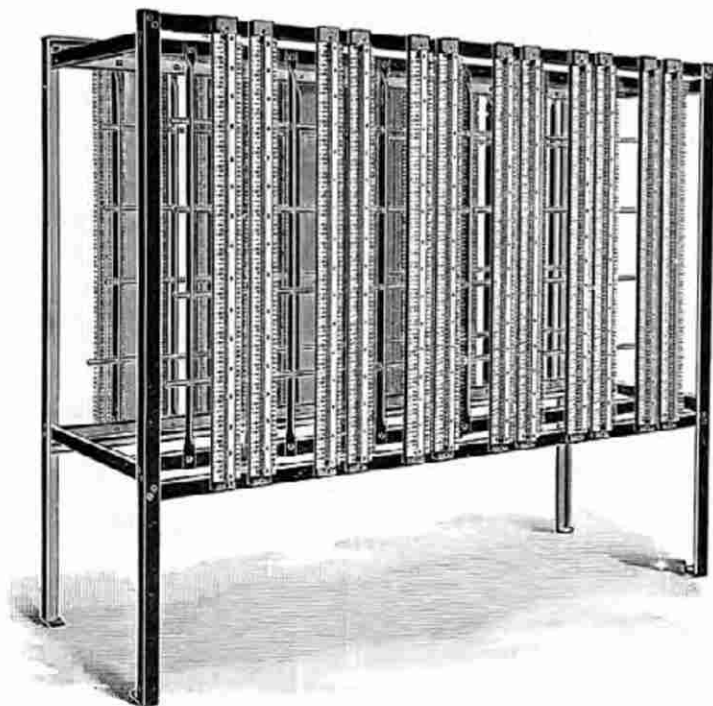
## Combination Lightning Arrester and Distributing Rack



Showing Lightning Arrester.  
Size,  $71\frac{1}{8}$  in. long, 24 in. wide, 60 in. high.

No. 250. A six-hundred (600) line combination lightning arrester and cross connecting rack. The frame is made of angle iron and is permanently joined and well braced to secure strength and rigidity. Illustration shows frame equipped with slate base heat wire arrester mounted vertically in 100-line sections.

## Combination Lightning Arrester and Distributing Rack



No. 250. Showing distributing strips

This illustration shows the cross connecting clips mounted on strips of fifty metallic lines each, to form one side of combination lightning arrester and cross connecting rack. (See page 50.)

## Notice to Purchasers

When ordering goods give address in full including county and shipping point. Also state whether shipment is desired by express or freight and by what lines.

Care should be taken to specify our catalogue numbers as well as the name of every article ordered.

If upon receipt of goods they are not found to be as represented, or not according to order, please advise us at once and we will give instructions for disposition.

Transportation charges on goods returned must be prepaid.

Name and address of shipper should be plainly marked on each package.

No goods will be accepted for credit after ten days from date of delivery.

Claims for damages or loss in transit should be made by consignee against the transportation company. We will render all assistance possible in securing the satisfactory adjustment of such claims.

Terms to parties having no account with us and not having satisfactory commercial agency rating, cash with order.

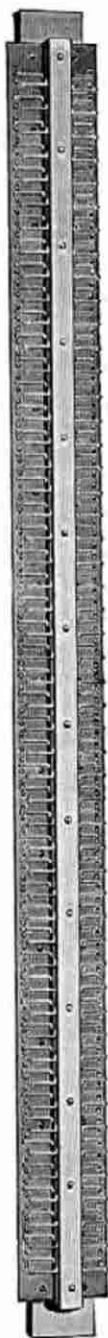
Accounts will be opened with responsible parties on thirty days' credit if satisfactory business references are furnished.

Goods will be shipped C. O. D. or draft with bill of lading when sufficient remittance accompanies order to cover transportation charges both ways.

C. O. D. return charges are always added.

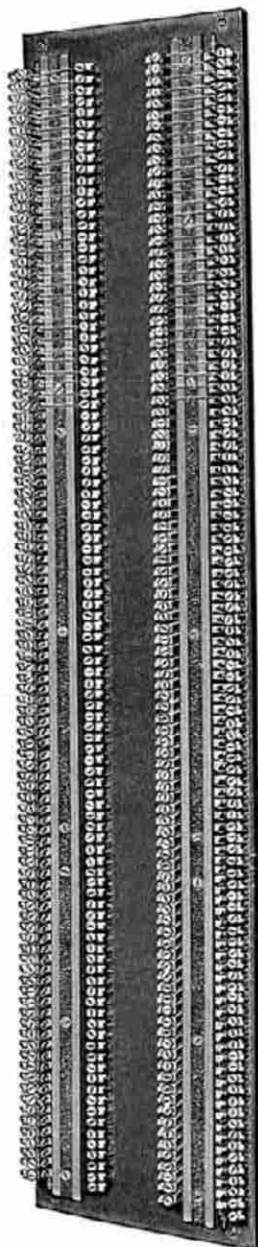
Remittances should be made in Chicago or New York draft, postoffice or express money order, registered letter or prepaid express.

The Stromberg-Carlson Telephone Mfg. Co.  
C h i c a g o .



No. 252

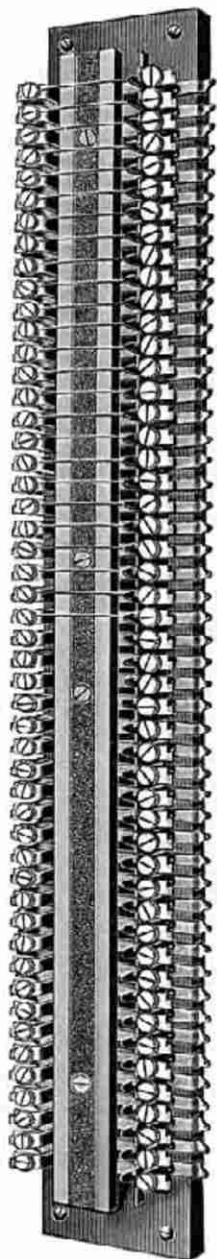
50 metallic  
line Stromberg-  
Carlson cross-  
connecting  
strip.



No. 253

100-pair slate  
base heat wire  
lightning arrester.  
It is provided with lo-  
cal circuit, which may  
have a bell, buzzer or  
low voltage lamp  
to indicate the  
blowing of a  
fuse.

## Cable Pole Lightning Arresters

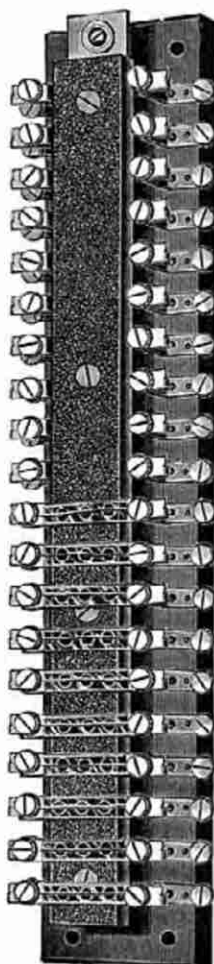


No. 267.

No. 267. 25-pair heat wire slate base lightning arrester with local alarm circuit.

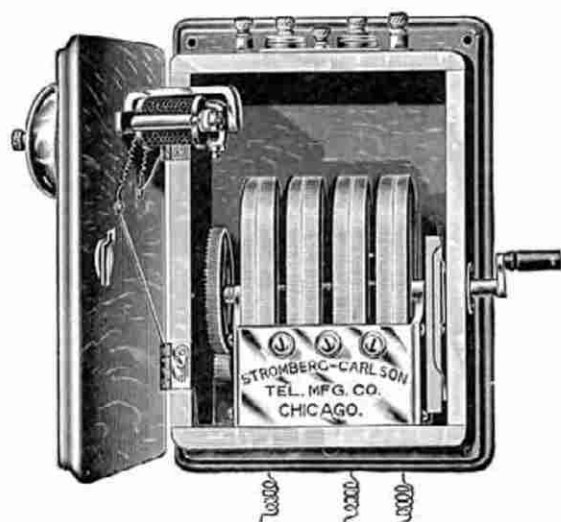
No. 268. Same as No. 267 but 50-pair capacity.

No. 275. 10 metallic line cable box arrester. Made in any capacity from 5 to 50 pairs. Mounted on wood, fibre or hard rubber base.



No. 275.

## Magnetos



Our latest standard type of magneto is shown in this illustration.

It is regularly equipped with automatic shunt generator with platinum contacts, cast brass wide cut gears, laminated armature, heavily enameled magnets securely fastened to pole pieces, standard ringer with lock nut adjustable frame, nickel plated gongs mounted on adjustable nickel plated standard, and carbon disc lightning arrester.

All connections are carefully soldered.

Furnished with push button shunt if desired.

Will furnish magnetos with long lever platinum contact switch and necessary binding posts for local connections if ordered.

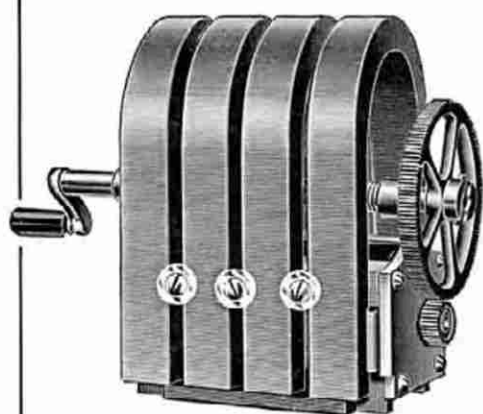
No. 90. Series ringer and four-bar generator.

No. 91. Bridging ringer and four-bar generator.

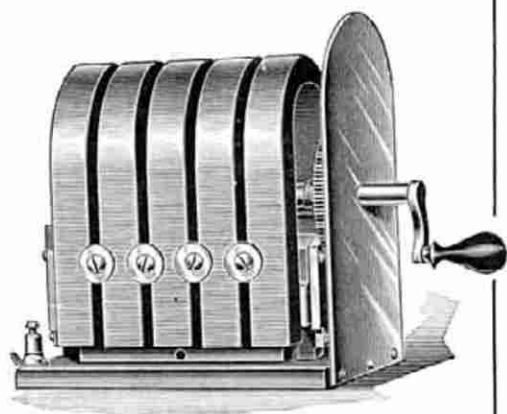
No. 92. Bridging ringer and five-bar generator.

Oak or walnut woodwork.

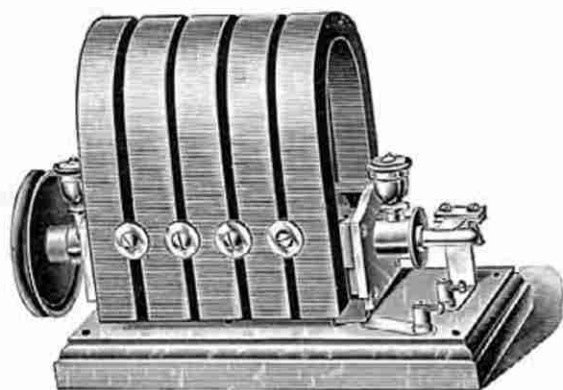
## Generators



No. 73.



No. 75.

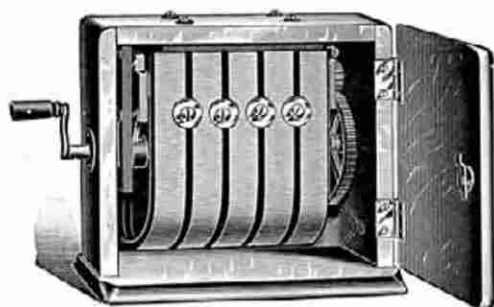


No. 76. Power Generator.

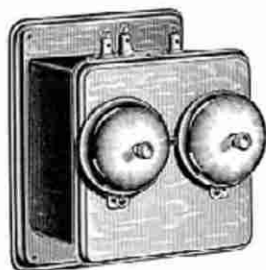
Generators provided with laminated armatures, automatic shunt and wide-cut gears.

- No. 73. Four-magnet generator for exchange and toll line telephones.
- No. 74. Five-magnet generator for heavily loaded country party line or farmers' line telephones.
- No. 75. Five-magnet generator with nickel-plated brass shield, for switch-board use.
- No. 76. Power generator.

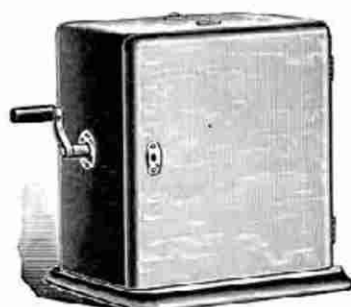
## Hand Generators and Extension Bells



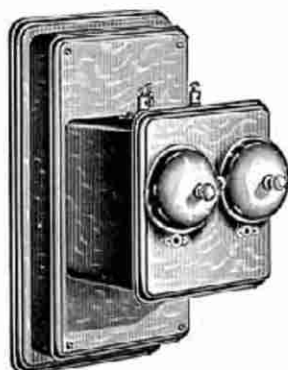
No. 69



No. 79



No. 71

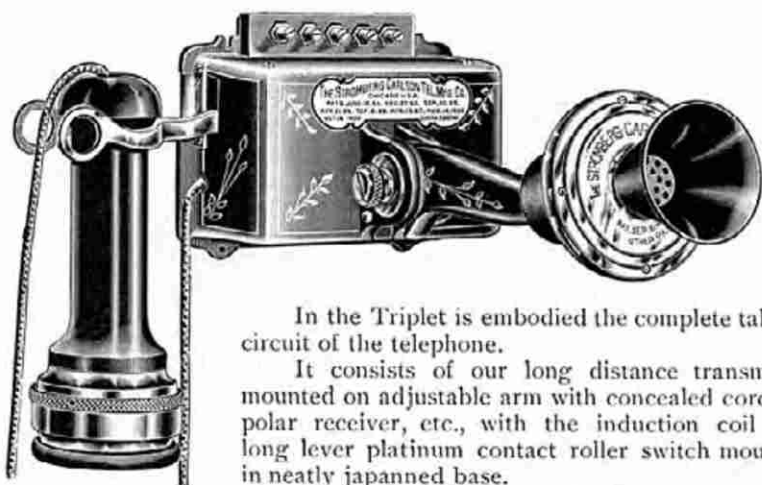


No. 83

- No. 69. Five-magnet hand generator.
- No. 71. Four-magnet hand generator.
- No. 79. Series extension bell.
- No. 81. Bridging extension bell.
- No. 83. "Central Energy" extension bell with condenser.

Finished in oak or walnut woodwork.

## The Triplet

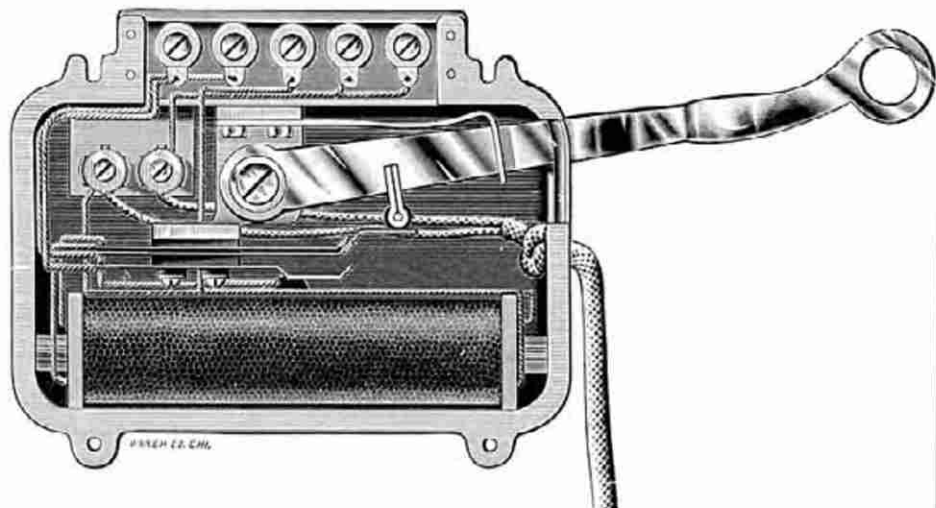


No. 50.

In the Triplet is embodied the complete talking circuit of the telephone.

It consists of our long distance transmitter mounted on adjustable arm with concealed cord, bipolar receiver, etc., with the induction coil and long lever platinum contact roller switch mounted in neatly japanned base.

The lever is permanently insulated from all working parts and forms no part of the circuit, the switch proper being composed of German silver platinum contact springs controlled by hard rubber roller mounted on the lever.

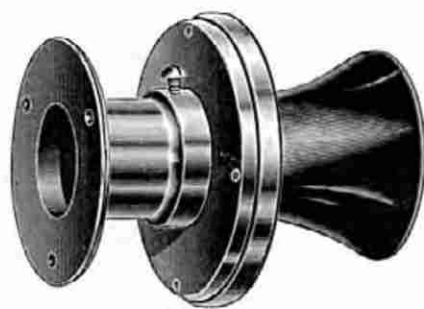


Showing the induction coil and switch mounted in base.

## Transmitter

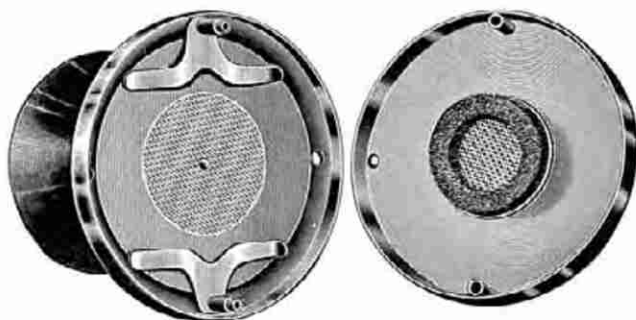


No. 55.



No. 56.

Can be used on any make of telephone if ordered with our special arm or flange.



Transmitter Parts.

No. 55. Transmitter head only, with rubber perforated mouthpiece.

No. 56. Transmitter with flange for mounting on any flat surface.

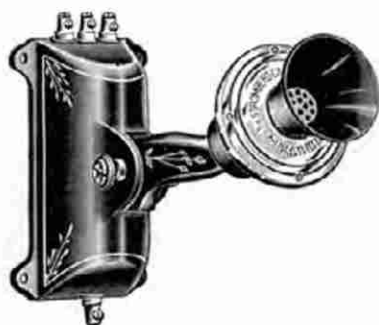
No. 57. Switchboard transmitter same as No. 55 with hooks for suspending.

No. 58. Transmitter mouthpiece.

No. 59. Transmitter flange only.

This transmitter is of our own special design and is broadly covered by letters patent. In its construction particular attention has been paid to detail from a standpoint of efficiency and durability. It is compactly mounted in highly polished nickel-plated outer casing, with heavy metallic diaphragm and rubber cloth auxiliary diaphragm, and is absolutely moisture proof. Both the front and back electrodes are of gold-plated gauze, and only the best grade of hard polished granular carbon is used. It is adjustable to any degree of sensitiveness, and is therefore adapted for service in noisy as well as quiet places.

## Special Transmitter Arms



No. 10.

These cuts illustrate our special adjustable transmitter arms for any make of instrument having switch hook mounted in magneto.

No. 10. Special arm with concealed cord and with induction coil mounted in base.

Provided with the necessary binding posts or, if preferred, with the wires leading out from induction coil and transmitter.

No. 20. Same as above but mounted on flat base and without the induction coil.

No. 30. Short heavily nickel plated adjustable arm.

Can be mounted on backboard, door of magneto or on Blake style transmitter box.

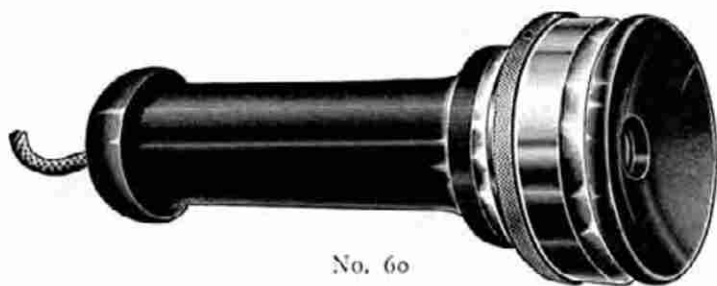


No. 20.



No. 30.

## Receiver



No. 60

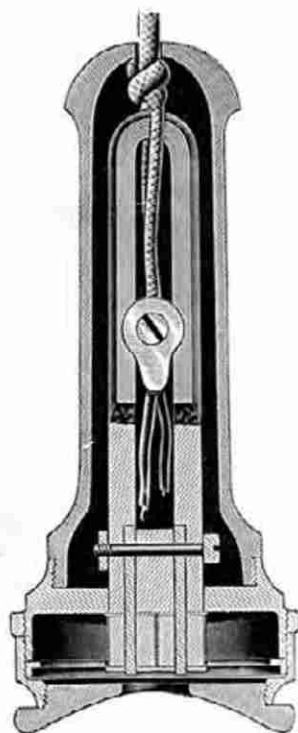
- No. 60. Receiver with cord.
- No. 61. Receiver cord, 3 feet silk.
- No. 62. Receiver shell.
- No. 63. Receiver ear cap.

The receiver is entirely original in design, construction and finish. It is of the horse-shoe magnet bi-polar type with all parts securely fastened in a heavily nickel-plated cast brass adjustable head.

The diaphragm is firmly clamped at its edge in the adjustable cap and is held in proper adjustment by a special locking device.

The cord passes through the end of the shell, and is held in such a manner as to remove all strain from the conductors, which are firmly attached to a fibre block between the magnets.

Both the hard rubber shell and cap are entirely independent of the receiver proper, hence the permanency of adjustment is in no way affected by variation in temperature.



Sectional view.

## Operator's Receiver

Operator's receiver constructed with a bi-polar magnet in a nickel-plated cast brass adjustable case.



No. 65. Receiver with head band.



No. 66. Watch case receiver.

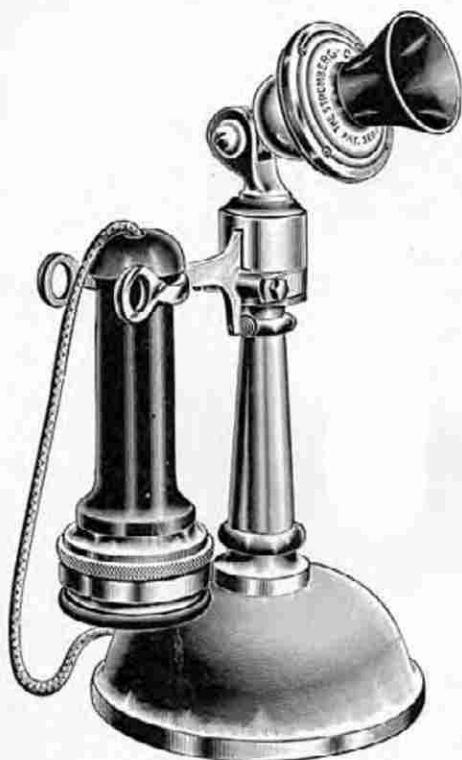


No. 67. Operator's head band.

Head band made of heavy nickel-plated spring German silver.

Adjustable  
Durable

## Portable Desk Telephone



No. 1.

This telephone is a very neatly designed, strongly built instrument with a substantial, heavily nickel-plated, highly polished cast brass base and pedestal. It is equipped with our long-distance adjustable transmitter, bi-polar receiver and seven-foot connecting cord with terminal block attached. The switch has platinum contacts entirely enclosed. The induction coil is mounted in the base.

No. 1. Telephone only.

No. 2. Exchange telephone with series

extension bell No. 79 and hand-generator No. 71.

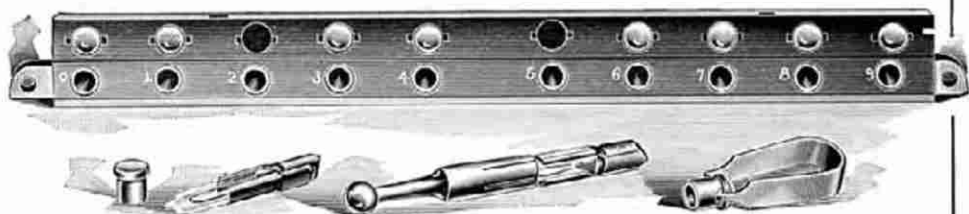
No. 3. Toll line telephone with bridging extension bell, No. 81, and four or five magnet hand-generator, No. 71 or No. 69.

No. 4. Central Energy telephone and extension bell with condenser No. 83.

Extension bells and hand-generators furnished in oak or walnut woodwork.

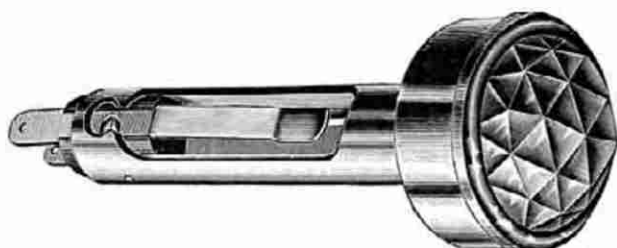


No. 125. Visual Line Signal

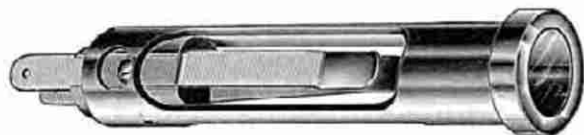


No. 126.

No. 126. Lamp line signals in banks of ten with answering jacks for multiple and trunking "Central Energy" and Generator Call lamp line signal switchboards. Cut also shows attachments for removing lamps.



No. 129. Pilot Lamp Socket with Bull's Eye.

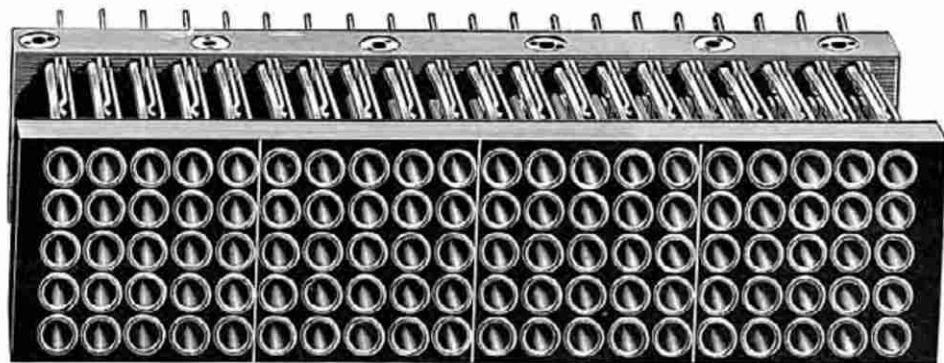


No. 127. Clearing-Out Lamp Socket.

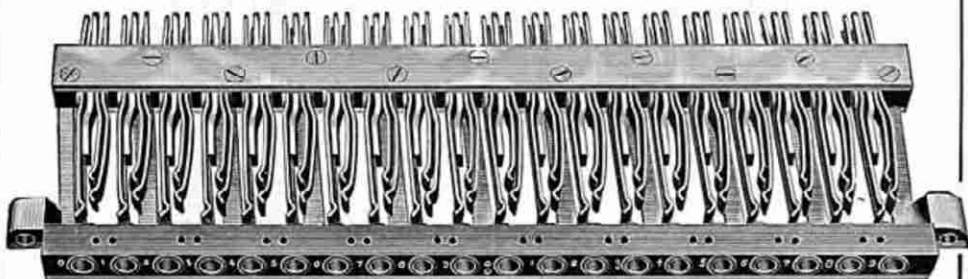


No. 128. Miniature Lamp.

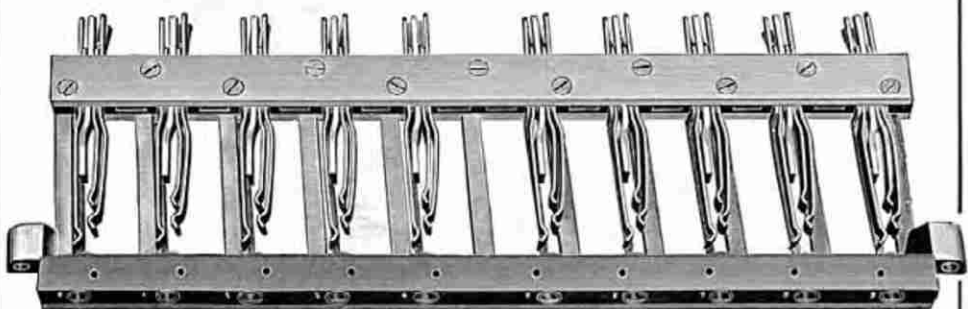
The Stromberg-Carlson Telephone Manufacturing Company



No. 130. Bank of 100 multiple spring jacks,  $\frac{3}{8}$  inch center, for large multiple switchboards.



No. 131. Bank of 20 multiple spring jacks,  $\frac{1}{2}$ -inch center.



No. 132. Bank of 10 answering jacks.



No. 133. Switchboard plug and cord.

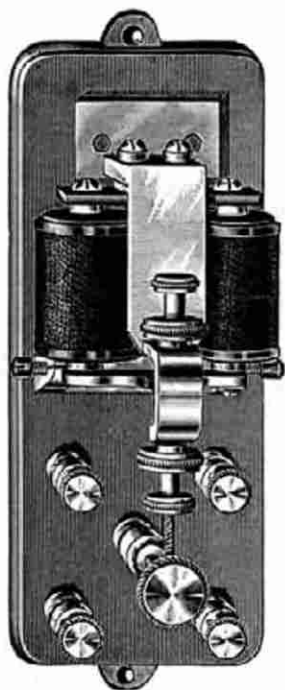
No. 134. Plug only.

No. 135. Cord only.

The Stromberg-Carlson Telephone Manufacturing Company



No. 140.  
Restoring Listen-  
ing Key.



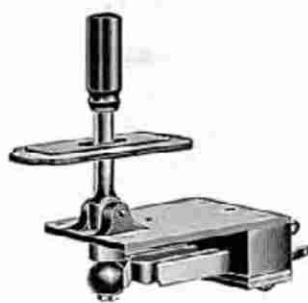
No. 150. Pony Relay.



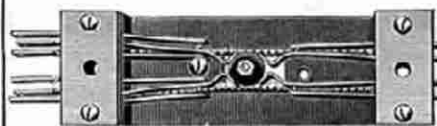
No. 141.  
Repeating Coil  
Key.



No. 143. Ringing and Listening Key. (Side View.)



No. 142. Listening Key.



Ringing and Listening Key. (Bottom View.)



No. 144. Double Ringing Key. (Bottom View.)

## Accessories



No. 300. S-C Compound Liquid Battery.



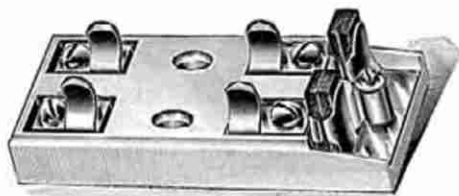
No. 301. Dry Battery.



No. 302. Individual Carbon Disc Lightning Arrester mounted on hardwood base.



No. 303. Carbon Arresters.



No. 304. Fuse and Carbon Arresters.



No. 305. Fuse Block.

## Construction Material and Telephone Supplies

In addition to the various types of apparatus illustrated in this catalogue we are prepared to furnish on short notice everything necessary to properly build, equip or maintain the largest public exchange or the smallest private plant or toll line, and our prices are as low as is possibly consistent with cost of production. In our supply department we carry a complete line of construction material, tools and telephone supplies of all kinds, including all standard types of batteries and battery supplies, insulated wire, induction and repeating coils, fuses, lightning arresters, switches, vibrating bells, push buttons, etc.

Will be pleased to submit estimates on receipt of memoranda of requirements. Write for our material and supply catalogue.

We also carry a line of portable sound proof telephone booths, pay station slot machines, signs, etc., and will furnish illustrated descriptive matter and quotations on request.

## Engineering Department

Our competent corps of electrical experts and engineers is at all times ready to furnish information concerning intricate cases of trouble, approved methods of construction, details as to planning proposed new exchanges and toll lines, etc., and our friends and patrons are invited to avail themselves of this service when in need of such information.



Telephones &  
Switch  
Boards

Printed at  
Hollister Brothers  
Chicago

## Portable Combination Telephone

It is equipped with regular long distance transmitter and bi-polar watchcase receiver.



The induction coil and platinum contact hook switch are mounted in neatly japanned iron box.

No. 6

No. 6. Combination telephone only, for extension set.

No. 7. Combination set with series extension bell and hand generator for exchange use.

No. 8. Combination set with bridging extension bell and four or five magnet generator for toll line work.

No. 9. "Central Energy" combination set and extension bell with condenser.

This is a very appropriate instrument for finely furnished private offices and residences.

## Series Exchange Telephone



No. 11

This illustration shows our regular Series Exchange Telephone, consisting of our No. 90 four-bar Magneto and No. 50 Triplet mounted on highly polished quarter-sawed oak back-board with battery box for two cells of Stromberg-Carlson wet battery, or two cells dry battery.

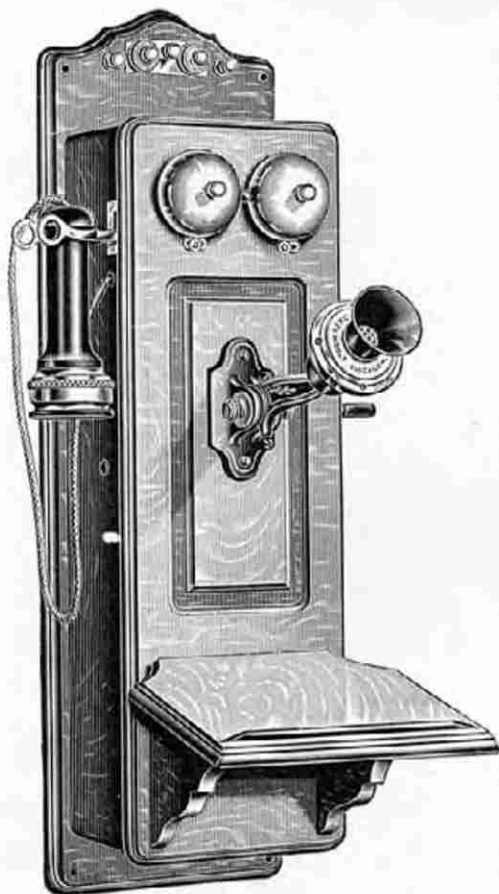


No. 12 same as above, but with wide battery box for two cells of standard battery.



All wall telephones are furnished with carbon disc lightning arrester mounted on magneto.

## Dry Battery Telephone



No. 25

This instrument is neat in design and finish.

It is equipped with long distance transmitter mounted on special arm, bi-polar receiver, long lever platinum contact switch, four-bar generator with automatic shunt, series ringers and carbon disc lightning arrester, and is arranged for two cells dry battery.



No. 15. Same as above but with either four or five-bar generator and high wound bridging ringers for country party lines and long distance toll lines.